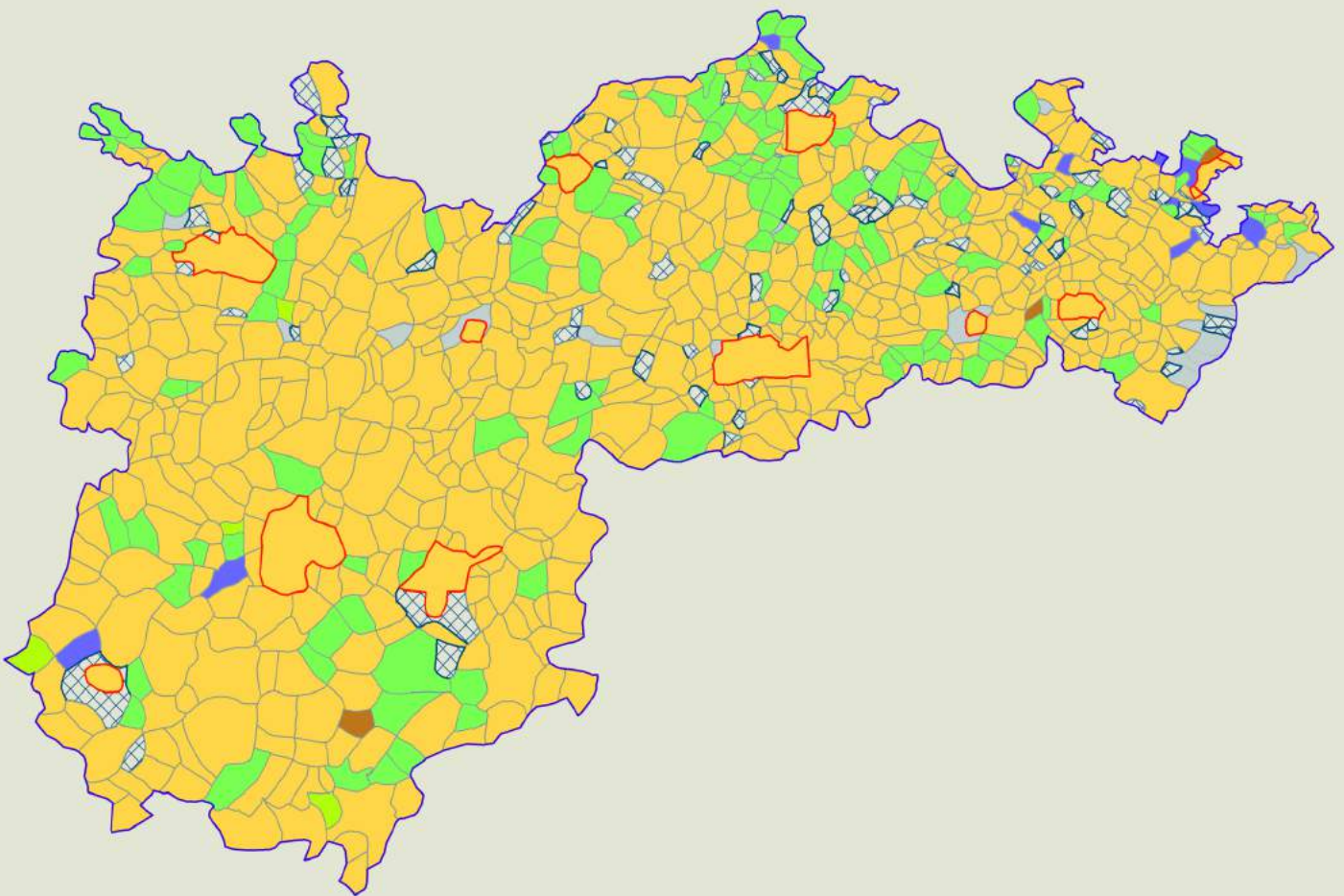


Haryana

Constituency Factbook™

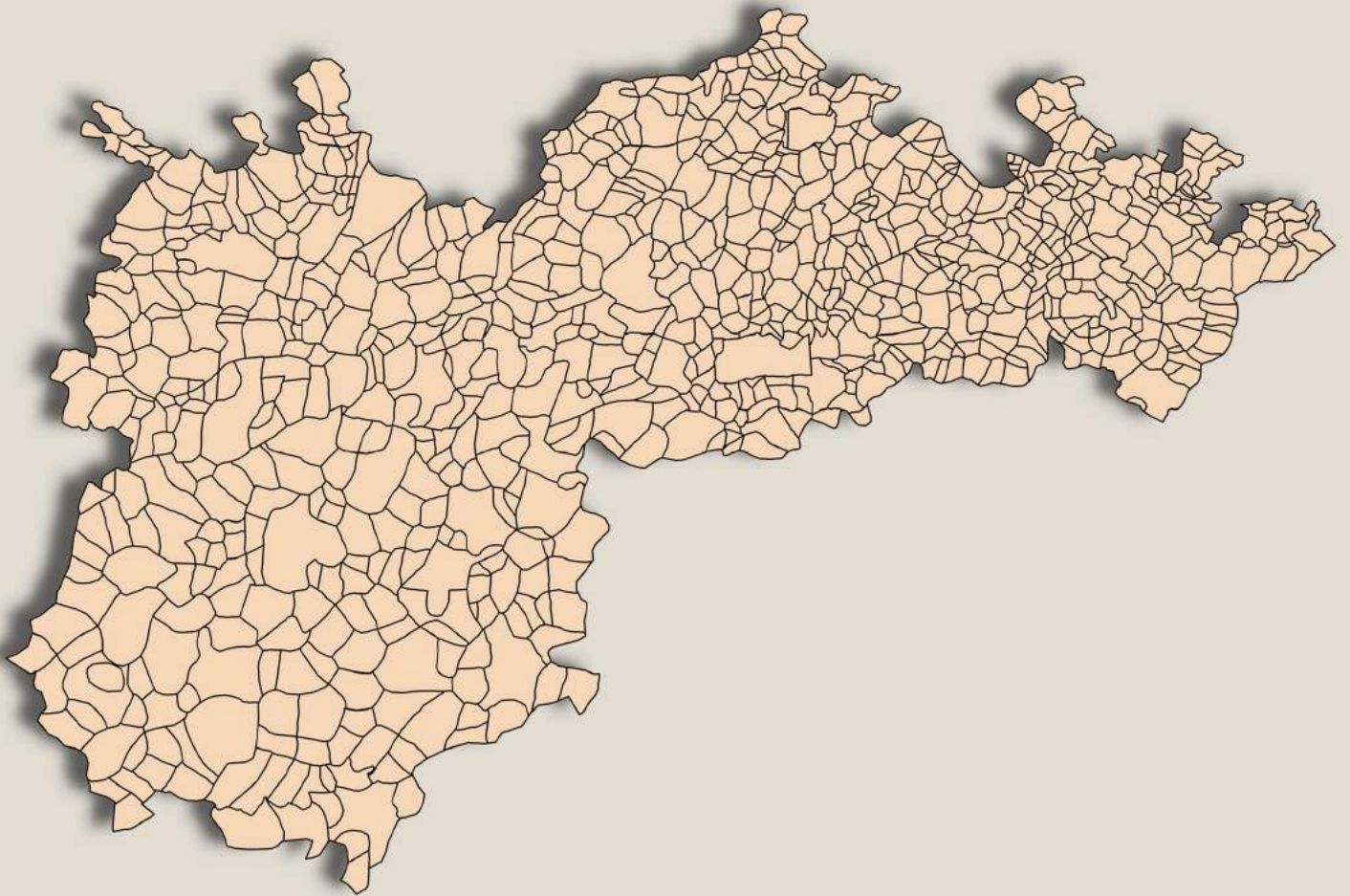
Kurukshetra Parliamentary Constituency



Haryana

Constituency Factbook™

Kurukshetra Parliamentary Constituency



Kurukshetra Lok Sabha

Editor & Director

Dr. R.K. Thukral

Research Editor

Dr. Shafeeq Rahman

**Compiled, Researched and Published by
Datanet India Pvt. Ltd.**

D-100, 1st Floor,

Okhla Industrial Area, Phase-I,

New Delhi- 110020.

Ph.: 91-11- 43580781, 26810964-65-66

Email : support@datanetindia-ebooks.com

Website : www.electionsinindia.com

Online Book Store :

www.datanetindia-ebooks.com

Report No. : CFB/HR-02-0619

ISBN : 978-93-5301-287-8

First Edition : January, 2018

Third Updated Edition : June, 2019

Price : Rs. 12500/-

US\$ 375

© Datanet India Pvt. Ltd.

All rights reserved. No part of this book may be reproduced, stored in a retrieval system or transmitted in any form or by any means, mechanical photocopying, photographing, scanning, recording or otherwise without the prior written permission of the publisher. Please refer to Disclaimer at page no. 266 for the use of this publication.

Printed in India

Contents

No.	Particulars	Page No.
	Introduction	
1	Parliamentary Constituency (PC) at a Glance Features of Parliamentary Constituency - (Lok Sabha) as per Delimitation Commission of India (2008)	1-8
	Location and Political Maps	
2	Location Map Boundaries of Parliamentary Constituency - (Lok Sabha) in District(s) Boundaries of Parliamentary Constituency along with Assembly Constituencies (ACs) Town & Village-wise Winner Parties- 2019-PE, 2014-PE, 2014-AE, 2009-PE and 2009-AE	9-16
	Administrative Setup	
3	Assembly Constituency - (Vidhan Sabha) Districts Sub-districts Towns Villages Inhabited Villages Uninhabited Villages Village Panchayats Intermediate and Block Panchayats	17-60
	Demographics	
4	Households Population Sex Ratio (Total & 0-6 Years) Social-Religious Population Literacy Rate Towns and Villages by Population Size	61-65
	Electoral Features	
5	Important Dates of Last Elections Held Electors by Gender Service Electors Voters Voters Turnout Polling Stations & Average Number of Electors per Polling Station Electors by Age Group Present Elected Representatives	66-75
	Historical Summary Election Results	
6	Vote Share of Major Parties Winning Margin (Number & Percentage) Polarity of Parties Summary Result of Parliamentary Elections 2019, 2014, 2009, 2004, 1999, 1998, 1996, 1991, 1989, 1984, 1980 and 1977 Summary Result of Assembly Elections 2014 and 2009	76-101
	Polling Station (PS) Level Electoral Features and Results Analysis (2019, 2014 and 2009)	
7	Top 20 PS with Highest and Lowest Electors by Assembly Constituencies (ACs) Top 20 PS with Highest and Lowest Poll Percentage by (ACs) Top 20 PS with Highest Votes by Major Political Parties by (ACs) Ranking of Winner, Runner-up and Third Position Parties by Number of Votes and Votes Percentage	102-244
	Share of Parliamentary Constituency	
8	Share of Parliamentary Constituency - (Lok Sabha) in Districts and State (2019 PE and 2014 AE)	245-246
	Socio-Economic Amenities	
9	Access to Administrative Units Agricultural, Manufacturing and Industrial Commodities (1st, 2nd & 3rd) Demographic Indicators Education Facilities Health & Manpower Drinking Water Supply Sanitation Entertainment and Recreations Infrastructure Power Food Allocation Distribution and Marketing of Agriculture Commodities Infrastructure Transport and Road Infrastructure Communication Banking and Financial Services Land Use Irrigation Source	248-264
10	Abbreviation & Sources	265
11	Disclaimer	266

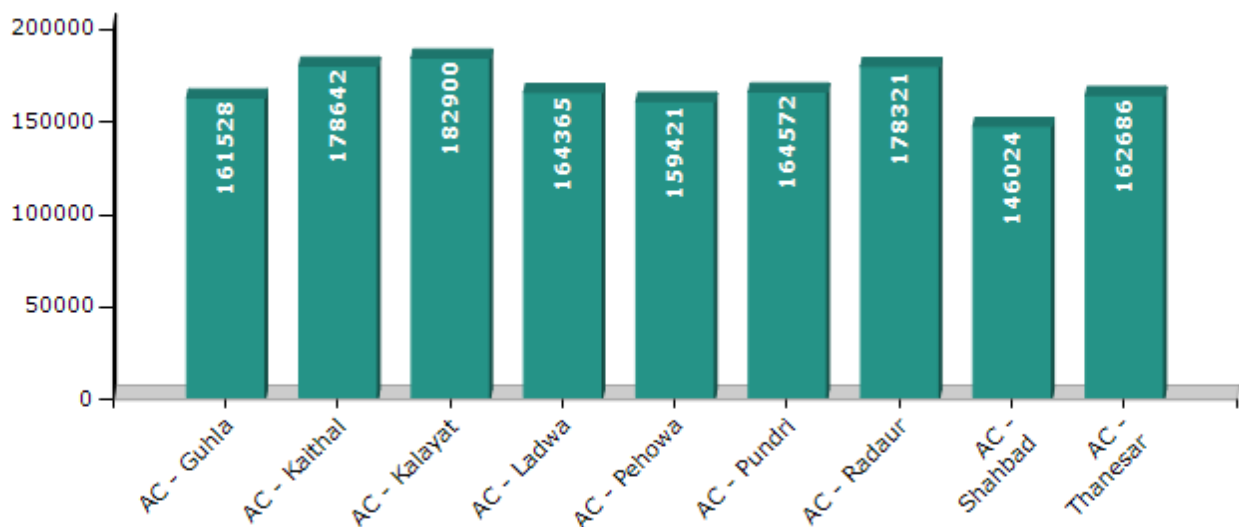
Introduction

Electoral Features in Last Parliamentary Election (PE) - 2014

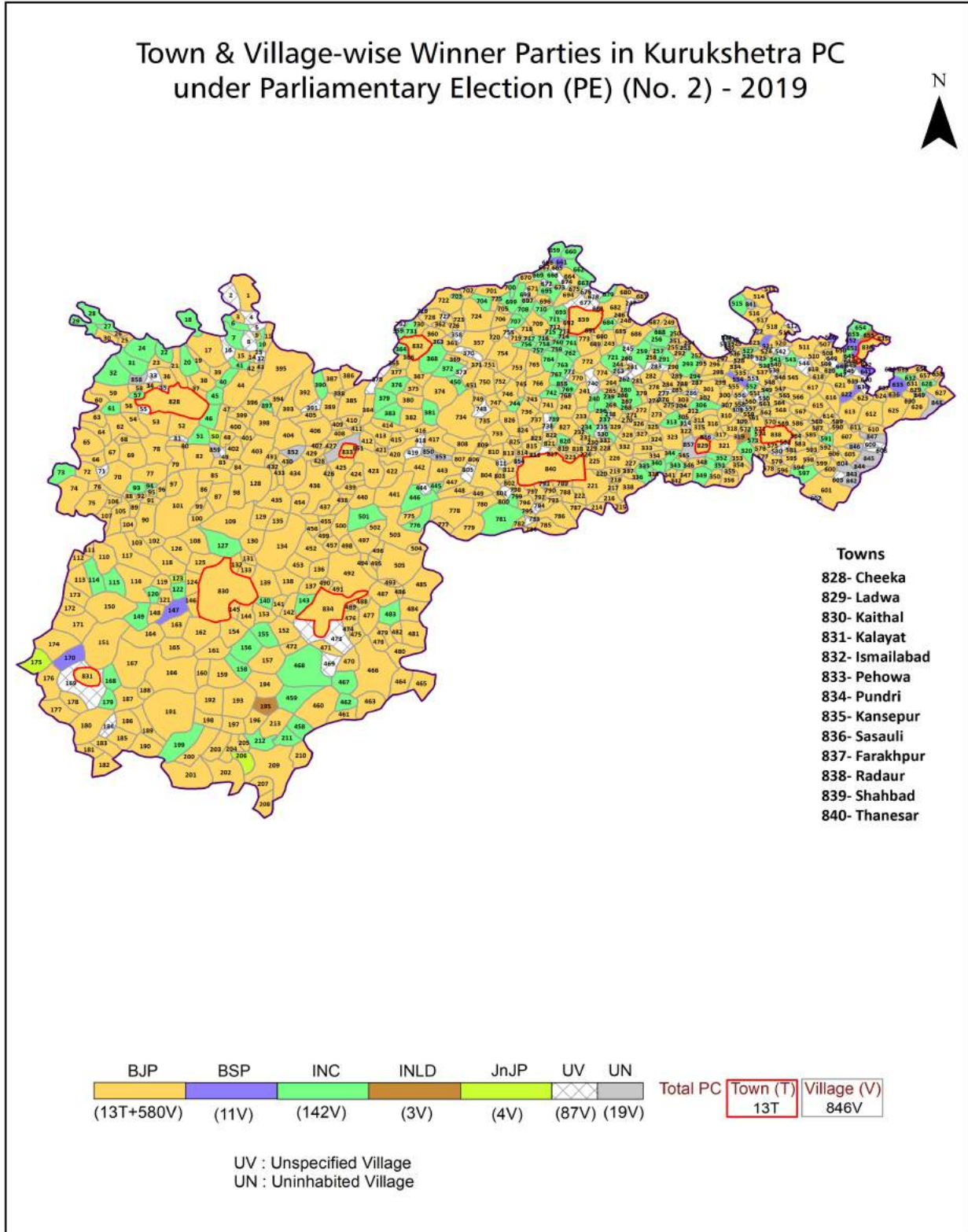
Particulars	Total Electors	Male (%)	Female (%)	Others (%)	Sex Ratio
AC - Guhla (15)	161528	86138 (53.33)	75390 (46.67)	0 (0)	875
AC - Kaithal (17)	178642	96358 (53.94)	82284 (46.06)	0 (0)	854
AC - Kalayat (16)	182900	101504 (55.5)	81396 (44.5)	0 (0)	802
AC - Ladwa (11)	164365	87781 (53.41)	76584 (46.59)	0 (0)	872
AC - Pehowa (14)	159421	84574 (53.05)	74847 (46.95)	0 (0)	885
AC - Pundri (18)	164572	89954 (54.66)	74618 (45.34)	0 (0)	830
AC - Radaur (10)	178321	96211 (53.95)	82110 (46.05)	0 (0)	853
AC - Shahbad (12)	146024	78114 (53.49)	67910 (46.51)	0 (0)	869
AC - Thanesar (13)	162686	87066 (53.52)	75620 (46.48)	0 (0)	869
PC - Kurukshetra (2)	1498459	807700 (53.9)	690759 (46.1)	0 (0)	855

Particulars	Voters	Voters Turnout	Polling Stations	Average Electors per Polling Station
AC - Guhla (15)	120638	74.69	169	956
AC - Kaithal (17)	132837	74.36	166	1076
AC - Kalayat (16)	132958	72.69	180	1016
AC - Ladwa (11)	130262	79.25	185	888
AC - Pehowa (14)	123129	77.24	174	916
AC - Pundri (18)	119436	72.57	161	1022
AC - Radaur (10)	142191	79.74	187	954
AC - Shahbad (12)	115208	78.9	159	918
AC - Thanesar (13)	118992	73.14	161	1010
PC - Kurukshetra (2)	1136173	75.82	1542	972

Number of Electors (PE) - 2014



Location & Political Map



(Refer to page number 14-40 to see the name according to code)

Administrative Setup

Sub-districts (Tehsil)/Towns/Villages Name in Kurukshetra Parliamentary Constituency

Constituency Name (No.) : Guhla (15)

District : Kaithal

Sub-districts : Guhla Kaithal

Town (Total 1) : Cheeka (MC) (828)

Villages (Total 109)

Inhabited Villages (Total 109) :

Agondh (107) (62)	Daba (8) (24)	Kamheri (26) (18)	Majri (106) (64)
Ahmadpur Garh (141) (8)	Dhandota (9) (39)	Kangthali (73) (79)	Malakpur (66) (100)
Andhli (91) (106)	Dhundwa (16) (81)	Kasaur (102) (65)	Malikpur (5) (26)
Arnoli (32) (1)	Dohar (30) (109)	Kasoli (142) (15)	Mand Kalian (115) (55)
Atela (1) (103)	Duserpur (113) (56)	Kawartan (64) (98)	Mandi Sadra (68) (86)
Azimgarh (3) (28)	Farsh Majra (25) (102)	Khambahera (128) (22)	Manjhlan (86) (104)
Badsui (10) (38)	Ferozepur (67) (99)	Khanpur (25) (108)	Mastgarh (103) (67)
Balbehra (6) (46)	Gagarpur (144) (7)	Kharak (95) (74)	Megha Majra (98) (71)
Baupur (131) (17)	Garhi Nazir (2) (29)	Kharal 130) (19)	Mehmudpur (4) (27)
Berad (125) (35)	Gogh (92) (88)	Kharkara (104) (69)	Mengran (132) (41)
Bhagal (1) (44)	Gohran (84) (92)	Kharodi (14) (53)	Mohanpur (139) (13)
Bhatian (121) (32)	Hansu Majra (108) (63)	Kheri Daban (109/110) (60)	Nagal (85) (89)
Bhunna (74) (78)	Harigarh Kingan (7) (45)	Kheri Gulamali (83) (90)	Nand Garh (118) (34)
Bhunslan (134) (43)	Harnola (79) (96)	Khushhal Majra (Part) (124) (36)	Pabsar (70) (83)
Bichhian (3) (48)	Hemu Majra (120) (57)	Ladana Chakoo (97) (70)	Paharpur (80) (94)
Bubakpur (117) (33)	Janedpur (93) (93)	Lalpur (119) (58)	Peedal (15) (52)
Budhanpur Gujran (137) (11)	Jodhwa (27) (6)	Lander Keema (89) (107)	Phaphrala (140) (9)
Chaba (7) (25)	Kakeor (62) (84)	Lander Peerzada (90) (105)	Pisawal (96) (75)
Chanchak (112) (61)	Kakheri (72) (82)	Lendaheri (30) (3)	Prabhawat (81) (91)
Chhana Agrian (29) (4)	Kakrala Inayat (69) (85)	Machhar Heri (61) (49)	Ramthali (99) (72)
Chhana Jattan (28) (5)	Kallar Majra (11) (37)	Majheri (133) (42)	Rasulpur (65) (87)

Contd....

Note : Code according to maps are shown in red parenthesis

Demographics

Demographic Characteristics

Particulars	Constituency (AC/PC No.)	Total	Rural	Urban
Household (Number)	AC - Guhla (15)	48224	40611	7613
	AC - Kaithal (17)	55650	27103	28547
	AC - Kalayat (16)	53267	49710	3557
	AC - Ladwa (11)	46909	41084	5825
	AC - Pehowa (14)	46164	35581	10583
	AC - Pundri (18)	47133	40595	6538
	AC - Radaur (10)	53458	39989	13469
	AC - Shahbad (12)	43251	34029	9222
	AC - Thanesar (13)	51819	20130	31689
		PC - Kurukshetra (2)	445875	328832
Population (Number)	AC - Guhla (15)	254335	215383	38952
	AC - Kaithal (17)	291649	146734	144915
	AC - Kalayat (16)	283150	264490	18660
	AC - Ladwa (11)	245303	216416	28887
	AC - Pehowa (14)	236630	184051	52579
	AC - Pundri (18)	245170	211686	33484
	AC - Radaur (10)	280267	215620	64647
	AC - Shahbad (12)	221695	179088	42607
	AC - Thanesar (13)	261027	105875	155152
		PC - Kurukshetra (2)	2319226	1739343
Sex Ratio (Female Per Thousand)	AC - Guhla (15)	904	907	890
	AC - Kaithal (17)	879	871	887
	AC - Kalayat (16)	864	863	878
	AC - Ladwa (11)	894	896	883
	AC - Pehowa (14)	905	907	898
	AC - Pundri (18)	881	880	888
	AC - Radaur (10)	868	863	884
	AC - Shahbad (12)	886	893	860
	AC - Thanesar (13)	868	900	847
		PC - Kurukshetra (2)	882	885
Sex Ratio (Age 0-6 Years) (Female Per Thousand)	AC - Guhla (15)	829	831	820
	AC - Kaithal (17)	829	834	824
	AC - Kalayat (16)	840	842	807
	AC - Ladwa (11)	815	815	821
	AC - Pehowa (14)	819	825	796
	AC - Pundri (18)	811	806	847
	AC - Radaur (10)	817	816	821
	AC - Shahbad (12)	792	797	771
	AC - Thanesar (13)	844	847	843
		PC - Kurukshetra (2)	823	823

Note : Estimates are based on 2011 Census.

Electoral Features

Electors by Age Group - April 2019 (Estimated)

Age Group	Constituency (AC/PC No.)	Total	Male	Female	Other
18-19	AC - Guhla (15)	1726 (0.97)	1299 (1.38)	427 (0.51)	0 (0)
	AC - Kaithal (17)	1363 (0.68)	1038 (0.97)	325 (0.35)	0 (0)
	AC - Kalayat (16)	1316 (0.65)	1054 (0.96)	262 (0.28)	0 (0)
	AC - Ladwa (11)	1815 (1)	1367 (1.43)	448 (0.52)	0 (0)
	AC - Pehowa (14)	1510 (0.88)	1152 (1.27)	358 (0.44)	0 (0)
	AC - Pundri (18)	358 (0.2)	282 (0.29)	76 (0.09)	0 (0)
	AC - Radaur (10)	1281 (0.66)	943 (0.91)	338 (0.38)	0 (0)
	AC - Shahbad (12)	1470 (0.91)	1115 (1.31)	355 (0.47)	0 (0)
	AC - Thanesar (13)	1309 (0.69)	887 (0.89)	422 (0.47)	0 (0)
		PC - Kurukshetra (2)	12148 (0.73)	9137 (1.04)	3011 (0.39)
20-29	AC - Guhla (15)	41976 (23.64)	24380 (25.9)	17593 (21.09)	3 (60)
	AC - Kaithal (17)	47954 (23.98)	28091 (26.27)	19863 (21.35)	0 (0)
	AC - Kalayat (16)	45433 (22.5)	27688 (25.22)	17745 (19.27)	0 (0)
	AC - Ladwa (11)	42825 (23.54)	24554 (25.67)	18271 (21.18)	0 (0)
	AC - Pehowa (14)	39831 (23.09)	22837 (25.15)	16994 (20.8)	0 (0)
	AC - Pundri (18)	38574 (21.38)	23026 (23.71)	15548 (18.67)	0 (0)
	AC - Radaur (10)	43558 (22.59)	26145 (25.23)	17413 (19.53)	0 (0)
	AC - Shahbad (12)	36878 (22.94)	21803 (25.6)	15075 (19.94)	0 (0)
	AC - Thanesar (13)	42999 (22.69)	24092 (24.19)	18907 (21.03)	0 (0)
		PC - Kurukshetra (2)	380028 (22.93)	222616 (25.22)	157409 (20.32)
30-39	AC - Guhla (15)	41022 (23.1)	20612 (21.9)	20410 (24.46)	0 (0)
	AC - Kaithal (17)	46613 (23.31)	24453 (22.87)	22160 (23.82)	0 (0)
	AC - Kalayat (16)	43711 (21.65)	23668 (21.56)	20043 (21.76)	0 (0)
	AC - Ladwa (11)	42870 (23.57)	20844 (21.79)	22026 (25.54)	0 (0)
	AC - Pehowa (14)	38266 (22.18)	19101 (21.04)	19165 (23.45)	0 (0)
	AC - Pundri (18)	43555 (24.14)	23355 (24.05)	20200 (24.25)	0 (0)
	AC - Radaur (10)	45894 (23.8)	22850 (22.05)	23044 (25.84)	0 (0)
	AC - Shahbad (12)	35749 (22.23)	17459 (20.5)	18290 (24.19)	0 (0)
	AC - Thanesar (13)	46301 (24.43)	23302 (23.4)	22999 (25.58)	0 (0)
		PC - Kurukshetra (2)	383981 (23.17)	195644 (22.16)	188337 (24.32)
40-49	AC - Guhla (15)	37857 (21.32)	20859 (22.16)	16997 (20.37)	1 (20)
	AC - Kaithal (17)	42591 (21.3)	22999 (21.51)	19592 (21.06)	0 (0)
	AC - Kalayat (16)	44094 (21.84)	24843 (22.63)	19251 (20.9)	0 (0)
	AC - Ladwa (11)	38578 (21.21)	21418 (22.39)	17160 (19.9)	0 (0)
	AC - Pehowa (14)	34978 (20.28)	19038 (20.97)	15940 (19.51)	0 (0)
	AC - Pundri (18)	36764 (20.38)	20541 (21.15)	16223 (19.48)	0 (0)
	AC - Radaur (10)	40953 (21.24)	22985 (22.18)	17968 (20.15)	0 (0)
	AC - Shahbad (12)	32860 (20.44)	18009 (21.15)	14851 (19.64)	0 (0)
	AC - Thanesar (13)	38481 (20.31)	20505 (20.59)	17976 (19.99)	0 (0)
	PC - Kurukshetra (2)	347156 (20.95)	191197 (21.66)	155958 (20.14)	1 (8.33)

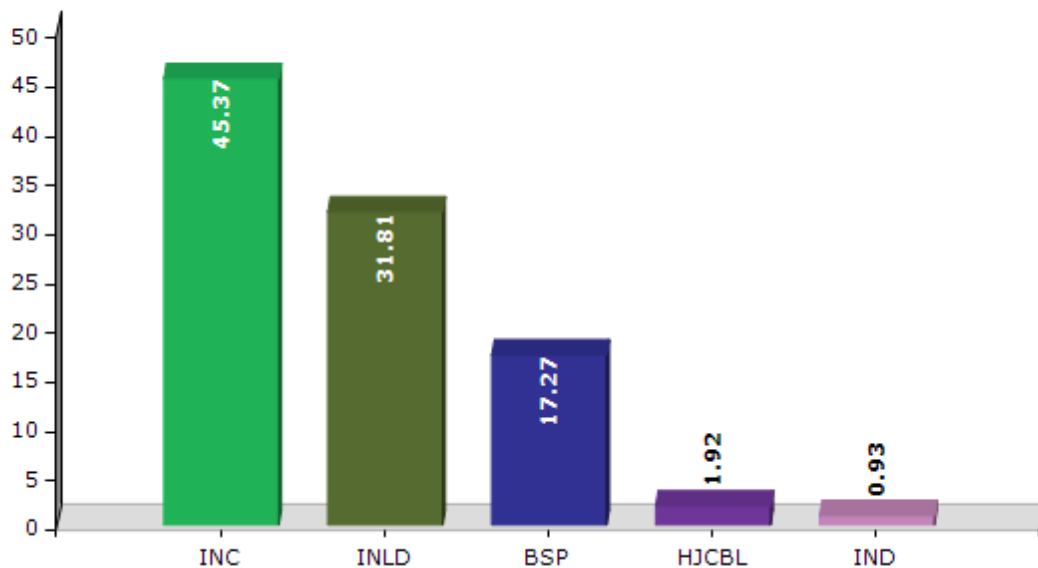
Contd....

Historical Summary Election Results

Summary Result of Parliamentary Election - 2009

Candidate Name	Party	Votes	Votes %
Naveen Jindal	INC	397204	45.37
Ashok Kumar Arora	INLD	278475	31.81
Gurdyal Singh Saini	BSP	151231	17.27
Jaswant Singh Cheema	HJCBL	16839	1.92
Subhash Mahendra	IND	8126	0.93
Suneeta Dhariwal	IND	7139	0.82
Vishnu Bhagwan Aggarwal	IND	7053	0.81
Pardhan Chand Chauhan	SP	2443	0.28
Virender Singh	IND	2132	0.24
Ran Singh	IND	1460	0.17
Dr. Ashwini Sharma Hrittwal	IND	1156	0.13
Atam Parkash	IND	926	0.11
Tarsem Lal	IND	639	0.07
Yash Pal	IND	631	0.07

Votes Percentage of Top Parties - 2009



Historical Summary Election Results

Party-wise Summary Result of Assembly Election* - 2009

Constituency (AC/PC No.)	Party	Rank	Votes	Votes %
NATIONAL PARTIES (Alphabetical Order)				
AC- Guhla (15)	Bharatiya Janata Party (BJP)	5th Position	1532	1.38
AC- Kaithal (17)	Bharatiya Janata Party (BJP)	4th Position	1649	1.41
AC- Kalayat (16)	Bharatiya Janata Party (BJP)	5th Position	1966	1.53
AC- Ladwa (11)	Bharatiya Janata Party (BJP)	Third Position	21775	19.38
AC- Pehowa (14)	Bharatiya Janata Party (BJP)	Third Position	19260	18.07
AC- Pundri (18)	Bharatiya Janata Party (BJP)	5th Position	1906	1.55
AC- Radaur (10)	Bharatiya Janata Party (BJP)	4th Position	13657	11.87
AC- Shahbad (12)	Bharatiya Janata Party (BJP)	Third Position	10593	11.42
AC- Thanesar (13)	Bharatiya Janata Party (BJP)	5th Position	3437	3.83
PC- Kurukshetra (2)	Bharatiya Janata Party (BJP)	4th Position	75775	7.61
AC- Guhla (15)	Bahujan Samaj Party (BSP)	4th Position	2987	2.7
AC- Kaithal (17)	Bahujan Samaj Party (BSP)	Third Position	13967	11.96
AC- Kalayat (16)	Bahujan Samaj Party (BSP)	Third Position	11974	9.3
AC- Ladwa (11)	Bahujan Samaj Party (BSP)	4th Position	9617	8.56
AC- Pehowa (14)	Bahujan Samaj Party (BSP)	5th Position	2974	2.79
AC- Pundri (18)	Bahujan Samaj Party (BSP)	Third Position	17227	14.03
AC- Radaur (10)	Bahujan Samaj Party (BSP)	Third Position	16698	14.51
AC- Shahbad (12)	Bahujan Samaj Party (BSP)	4th Position	6387	6.88
AC- Thanesar (13)	Bahujan Samaj Party (BSP)	4th Position	4339	4.83
PC- Kurukshetra (2)	Bahujan Samaj Party (BSP)	Third Position	86170	8.65
AC- Shahbad (12)	Communist Party Of India (CPI)	6th Position	934	1.01
PC- Kurukshetra (2)	Communist Party Of India (CPI)	10th Position	934	0.09
AC- Guhla (15)	Communist Party Of India (Marxist) (CPM)	6th Position	976	0.88

Contd....

Note : * : Parties vote distribution in state assembly election for all assemblies constituency are combined which fall under Kurukshetra PC.

Polling Station Level Electoral Features

Top 20 Polling Stations with Lowest Poll Percentage in Assembly Constituencies of Kurukshetra Parliamentary Constituency (2019)

No. of PS	Name of Polling Stations	Electors	Voters	Lowest Poll%
Constituency Name (No.) : Guhla (15)				
151	Kawartan	823	446	54.19
57	Cheeka	1100	618	56.18
20	Arnoli	1172	659	56.23
21	Arnoli	1229	701	57.04
97	Sultania	998	589	59.02
112	Bhuna (Dera Ram Nagar)	748	445	59.49
56	Cheeka	774	471	60.85
142	Paharpur	858	524	61.07
53	Cheeka	847	526	62.1
107	Theh Butana	672	418	62.2
2	Ajimgarh	633	394	62.24
35	Badsui	754	473	62.73
132	Kasour	689	433	62.84
19	Arnoli	1142	721	63.13
111	Bhuna	1151	731	63.51
140	Ladana Chakku	953	617	64.74
175	Siwan	1145	743	64.89
137	Ramthali	836	548	65.55
63	Cheeka(Salimpur)	1070	702	65.61
183	Karkan	905	594	65.64

Party-wise Polling Station Level Election Results Analysis

Top 20 Polling Stations with Highest Number of Votes Secured by Bharatiya Janata Party (BJP) in Assembly Constituencies of Kurukshetra Parliamentary Constituency (2019)

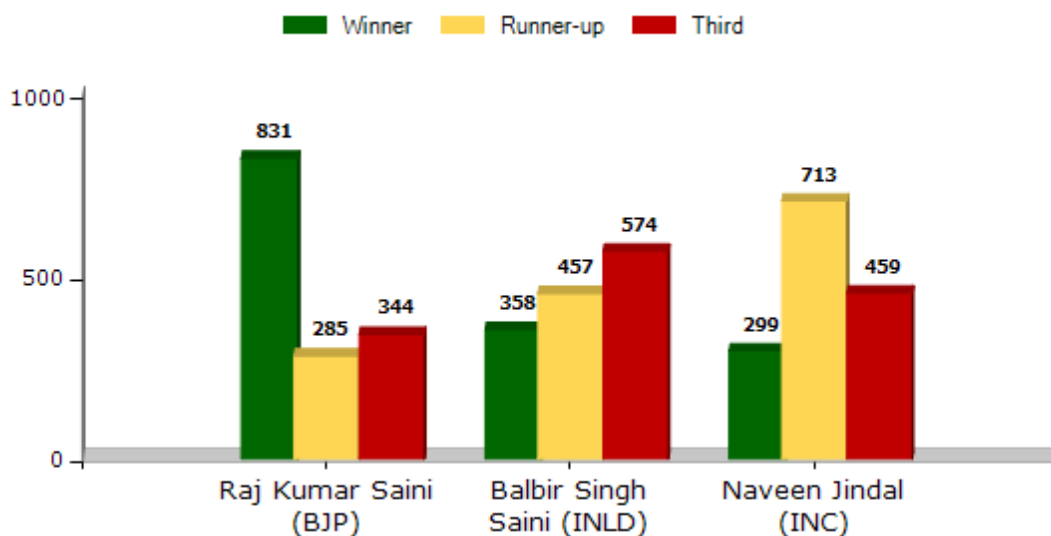
No. of PS	Name of Polling Stations	Voters	Votes	Votes%
Constituency Name (No.) : Guhla (15)				
173	Siwan	889	763	85.83
161	Khanpur	815	737	90.43
174	Siwan	884	735	83.14
172	Siwan	859	717	83.47
195	Atela Dharampura	924	712	77.06
164	Siwan	866	711	82.1
169	Siwan	866	683	78.87
109	Bhuna	786	669	85.11
162	Khanpur	807	665	82.4
165	Siwan	842	650	77.2
52	Guhla	1006	640	63.62
163	Siwan	788	608	77.16
166	Siwan	763	605	79.29
98	Deserpur	890	601	67.53
167	Siwan	783	597	76.25
168	Siwan	721	571	79.2
92	Kharodi	832	571	68.63
157	Dohar	702	564	80.34
196	Farashmajra	839	561	66.87
101	Agondh	807	561	69.52

Polling Station Level Election Results

Ranking of Winner, Runner & Third Position by Number and Percentage of Votes in Polling Stations (2014)

Results	Winner : Raj Kumar Saini (BJP)			Runner : Balbir Singh Saini (INLD)			Third Position : Naveen Jindal (INC)		
	Winner	Runner	Third	Winner	Runner	Third	Winner	Runner	Third
By Number of Votes									
Less than 100	2	19	142	2	30	281	2	62	151
100-199	52	119	165	28	223	250	43	361	263
200-299	211	127	33	97	167	43	122	234	44
300-399	239	17	4	109	30	0	84	53	1
400-499	173	3	0	77	7	0	37	3	0
500 & Above	154	0	0	45	0	0	11	0	0
Total	831	285	344	358	457	574	299	713	459
By Percentage of Votes									
0-20	0	29	255	0	89	461	0	172	328
20-40	166	254	89	109	357	113	128	535	131
40-60	506	2	0	210	11	0	153	6	0
60-80	156	0	0	38	0	0	16	0	0
80-100	3	0	0	1	0	0	2	0	0
Total	831	285	344	358	457	574	299	713	459

Party wise Rank in Polling Station 2014



Socio-Economic Amenities - Rural

Access to Education Facilities

Particulars	Number of Villages (% of Population)				
	Available	Not Available	If Not Available (Distance of Nearest Facility)		
			A	B	C
Govt. Primary School	791 (99)	36 (1)	23 (0)	5 (0)	1 (0)
Private Primary School	381 (63)	446 (37)	3 (0)	1 (0)	0 (0)
Govt. Middle School	549 (86)	278 (14)	177 (8)	63 (3)	4 (0)
Private Middle School	282 (55)	545 (45)	9 (0)	5 (0)	0 (0)
Govt. Secondary School	270 (61)	557 (39)	318 (22)	169 (11)	31 (3)
Private Secondary School	170 (42)	657 (58)	12 (1)	5 (0)	0 (0)
Govt. Senior Secondary School	134 (39)	693 (61)	320 (26)	253 (23)	68 (7)
Private Senior Secondary School	91 (27)	736 (73)	18 (1)	14 (1)	2 (0)
Govt. Arts and Science Degree College	0 (0)	827 (100)	54 (5)	130 (19)	309 (38)
Private Arts and Science Degree College	2 (1)	825 (99)	42 (4)	171 (17)	119 (16)
Govt. Engineering College	0 (0)	827 (100)	34 (3)	73 (11)	326 (42)
Private Engineering College	7 (1)	820 (99)	42 (4)	166 (17)	179 (22)
Govt. Medicine College	0 (0)	827 (100)	53 (6)	90 (10)	513 (70)
Private Medicine College	0 (0)	827 (100)	13 (1)	53 (4)	105 (9)
Govt. Management Institute	0 (0)	827 (100)	36 (5)	83 (12)	374 (46)
Private Management Institute	11 (3)	816 (97)	28 (3)	126 (12)	169 (19)
Govt. Polytechnic	2 (1)	825 (99)	38 (5)	103 (15)	221 (32)
Private Polytechnic	8 (1)	819 (99)	60 (5)	181 (18)	214 (24)
Govt. Vocational Training School/ITI	2 (1)	825 (99)	71 (7)	229 (28)	471 (57)
Private Vocational Training School/ITI	6 (2)	821 (98)	13 (1)	18 (2)	17 (1)
Govt. Non Formal Training Centre	0 (0)	827 (100)	34 (4)	139 (18)	518 (66)
Private Non Formal Training Centre	0 (0)	827 (100)	17 (1)	61 (6)	58 (5)
Govt. School For Disabled	0 (0)	827 (100)	24 (3)	125 (13)	678 (84)
Private School For Disabled	0 (0)	827 (100)	0 (0)	0 (0)	0 (0)
Government Others	0 (0)	827 (100)	0 (0)	0 (0)	0 (0)
Private Others	0 (0)	827 (100)	0 (0)	0 (0)	0 (0)

Note : Distance A : Less than 5 km; B : Between 5-10 km; C : 10+ km.; Source : Data Analysis is based on 2011 Census.

DISCLAIMER

The Terms of Use and Disclaimer of Datanet India Private Limited (hereinafter referred to as "Datanet") for use of this analysis report of **Kurukshetra Parliamentary Constituency (Kurukshetra Lok Sabha)** :-

1. **Constituency Factbook™** is a Registered Trade Mark owned by Datanet.
2. All the maps are sketched and graphical representation only and have not been drawn to the scale and also not to represent the actual geographical area or boundary of the unit.
3. The data for the aforesaid analysis is based on authentic sources and has been culled from the various publications of Census, CSO and NSSO for district and block level data, various central and state government departments, Central & State Elections Commissions and the concerned Returning Officers' releases, Electoral Rolls, Election results and allied publications, internal assessment, surveys, estimates and analysis. Therefore, certain adjustment of data at micro level may have been done to arrive closer to the macro data.
4. Data have been provided on an "As Is" and "As AVAILABLE" basis
5. The colours shown in the maps or diagram and charts of a particular party, alliance or AC are indicative and do not represent them.
6. This publication which includes maps, sheets, graphs and data would be the property under copyright of Datanet only. The user may use these for its internal study, analysis and research purposes. It's public display, re-selling or any commercial uses by the user are not allowed.
7. Datanet has taken due care and caution in compilation and processing of data and allied information, but does not guarantee the accuracy, adequacy or completeness of any information/analysis and will be not responsible for any errors or omissions or for the results obtained from the use of such information/analysis.
8. All the contents for the publication have been culled from various authentic sources and Datanet reasonably believes such sources to be reliable, but does not make any representations, express or implied as to the accuracy or fitness of use of such information. The information or contents of the information/analysis do not constitute advice and should not be relied upon in making (or refraining from making) any decision. Any reliance placed upon the information provided by Datanet is the sole responsibility and strictly at the user's risk.
9. In no event will Datanet be liable for any damages (including, without limitation, damages for loss of business projects, or loss of profits) arising in contract, tort or otherwise from the use of or inability to use any of its contents, or from any action taken (or refrained from being taken) as a result of using the analysis or any of its contents. Datanet its directors, owners, editors, officials, employees, distributor and agents or any associate will not be liable for any errors in the information contained or any consequences arising from the use of the contents of the provided information/analysis.
10. If any provision of these terms and conditions is held invalid or illegal or unenforceable for any reason by any court of competent jurisdiction, such provision shall be severed and the remainder of provisions of the terms and conditions shall continue in full force and effect as if the Term of Use had been executed with the invalid, illegal or unenforceable provision eliminated.
11. If there are any discrepancies in the information provided, please bring it to attention of Datanet for suitable rectification measures.

Buy Online This Complete Book At
Datanet India eBooks Store

www.datanetindia-ebooks.com

or go directly at

[http://www.datanetindia-
ebooks.com/Constituency_Factbook/Haryana/Kurukshetra](http://www.datanetindia-ebooks.com/Constituency_Factbook/Haryana/Kurukshetra)

Elections*in***India**.com
THE ESSENCE OF INDIAN DEMOCRACY

