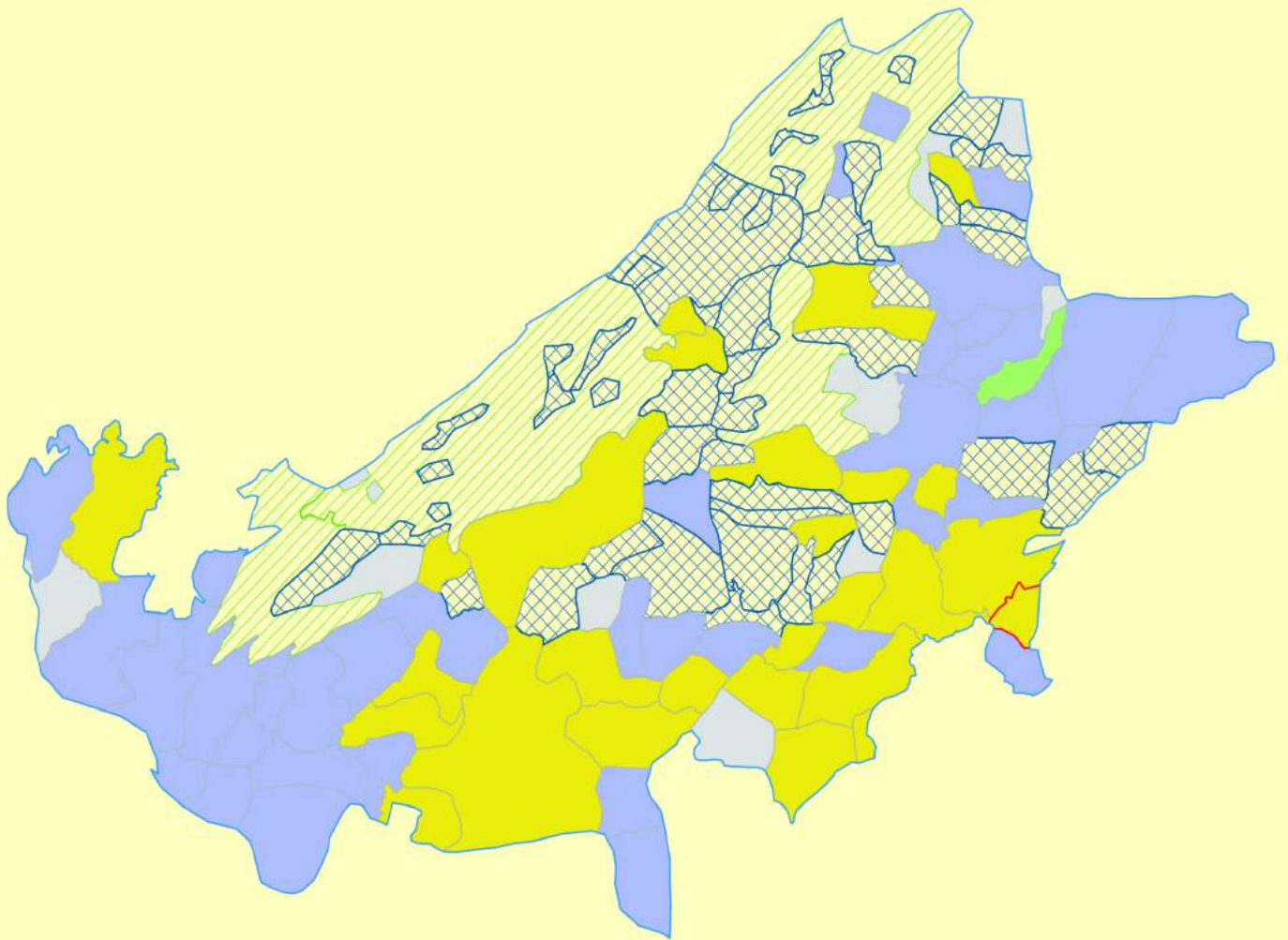
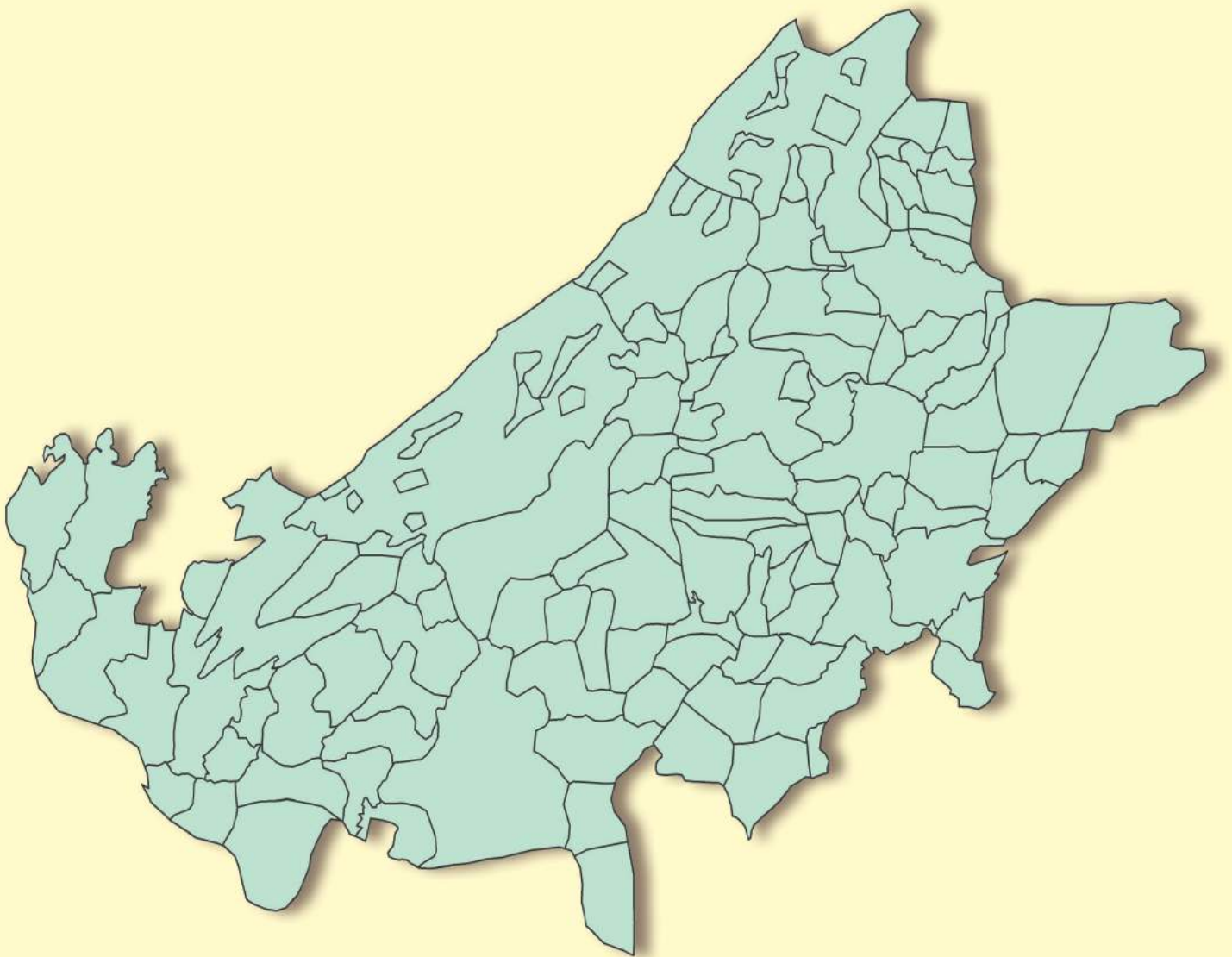


# Andhra Pradesh Assembly Factbook™ Prathipadu Assembly Constituency



**Key Electoral Data of Prathipadu Assembly Constituency  
(1955-2017)**

# **Andhra Pradesh Assembly Factbook™**



**Prathipadu Assembly Constituency**

**Editor & Director**

Dr. R.K. Thukral

**Research Editor**

Dr. Shafeeq Rahman

**Compiled, Researched and Published by  
Datanet India Pvt. Ltd.**

D-100, 1st Floor,

Okhla Industrial Area, Phase-I,

New Delhi- 110020.

Ph.: 91-11- 43580781, 26810964-65-66

Email : support@datanetindia-ebooks.com

Website : www.electionsinindia.com

**Online Book Store :**

www.datanetindia-ebooks.com

**Report No. :** AFB/AP-036-0118

**ISBN :** 978-93-87415-97-3

**First Edition :** January, 2018

**Third Updated Edition :** June, 2019

**Price :** Rs. 11500/-

US\$ 310

**© Datanet India Pvt. Ltd.**

All rights reserved. No part of this book may be reproduced, stored in a retrieval system or transmitted in any form or by any means, mechanical photocopying, photographing, scanning, recording or otherwise without the prior written permission of the publisher. Please refer to Disclaimer at page no. 149 for the use of this publication.

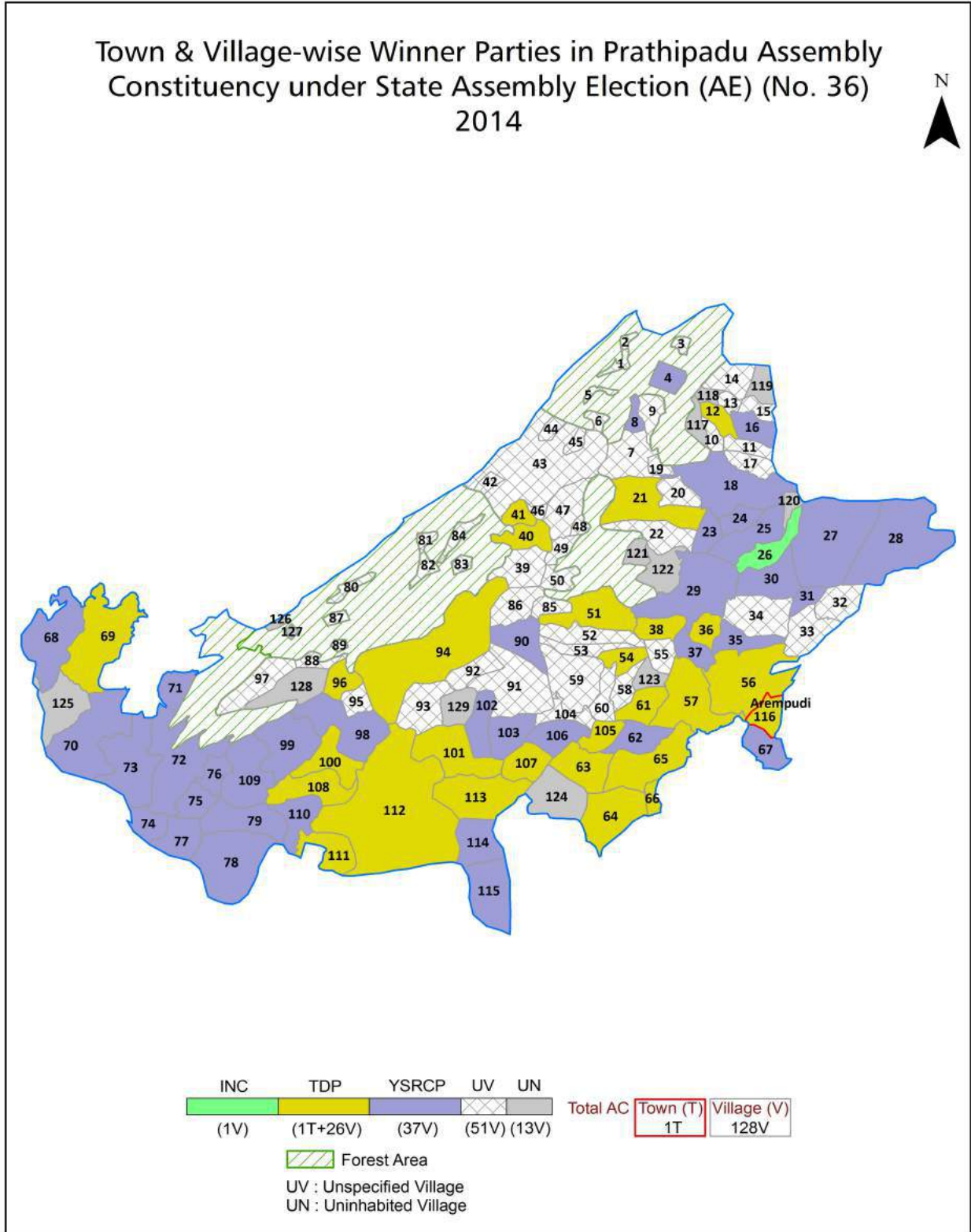
Printed in India

## Contents

No.	Particulars	Page No.
	<b>Introduction</b>	
1	Assembly Constituency at a Glance   Features of Assembly as per Delimitation Commission of India (2008)	1-2
	<b>Location and Political Maps</b>	
2	Location Map   Boundaries of Assembly Constituency in District   Boundaries of Assembly Constituency under Parliamentary Constituency   Town & Village-wise Winner Parties- 2014-PE, 2014-AE, 2009-PE and 2009-AE	3-9
	<b>Administrative Setup</b>	
3	District   Sub-district   Towns   Villages   Inhabited Villages   Uninhabited Villages   Village Panchayat   Intermediate Panchayat	10-16
	<b>Demographics</b>	
4	Population   Households   Rural/Urban Population   Towns and Villages by Population Size   Sex Ratio (Total & 0-6 Years)   Religious Population   Social Population   Literacy Rate	17-18
	<b>Electoral Features</b>	
5	Important Dates of Last Elections Held   Electors by Gender   Service Electors   Voters   Voters Turnout   Polling Stations & Average Number of Electors per Polling Station   Electors by Age Group   Present Elected Representatives	19-24
	<b>Historical Summary Election Results</b>	
6	Vote Share of Major Parties   Winning Margin (Number & Percentage)   Polarity of Parties   Summary Result of Assembly Segment of Parliamentary Elections 2014, 2009, 2004 and 1999   Summary Result of Assembly Elections 2014, 2009, 2004, 1999, 1994, 1989, 1985, 1983, 1978, 1972, 1967, 1962 and 1955	25-44
	<b>Polling Station Level Election Results</b>	
7	Name and Number of Polling Station 2014-PE, 2014-AE, 2009-PE and 2009-AE   Polling Station-wise Electoral, Voter & Voter Turnout 2014-PE, 2014-AE, 2009-PE and 2009-AE   Polling Station wise Elections Results 2014-PE, 2014-AE, 2009-PE and 2009-AE	45-128
	<b>Share of Assembly Constituency</b>	
8	Share of Assembly Constituency in State, District and Parliamentary Constituency	129
	<b>Socio-Economic Amenities</b>	
9	Access to Administrative Units   Agricultural, Manufacturing and Industrial Commodities   Demographic Indicators   Education   Health & Manpower   Drinking Water Supply   Sanitation   Entertainment and Receptions Infrastructure   Power   Food Allocation Distribution and Marketing of Agriculture Commodities Infrastructure   Transport and Road Infrastructure   Communication   Banking and Financial Services   Land Use   Irrigation Source	131-145
10	<b>Abbreviation &amp; Sources</b>	147
11	<b>Disclaimer</b>	149



Location & Political Map



## Administrative Setup

### List of Village Panchayat & Intermediate Panchayat (Block) Name

Village Name	Village Panchayat Name	Intermediate Panchayat Name
A. Mallavaram	A. Mallavaram	Rowthulapudi
Ammirekhala	Velangi	Sankhavaram
Ankampalem	Pedamallapuram	Sankhavaram
Annavaram	Annavaram	Sankhavaram
Anumarthi	Velangi	Sankhavaram
Atchampeta	Jaggampeta	Sankhavaram
Avethi	Velangi	Sankhavaram
Balarampuram	Balarampuram	Rowthulapudi
Bapabhupalapatnam	A. Mallavaram	Rowthulapudi
Bapannadhara	Buradakota	Prathipadu
Bavuruvaka	Bavuruvaka	Prathipadu
Bhadravaram	Bhadravaram	Yeleswaram
Billavaka	Srungadhara Agraharam	Rowthulapudi
Buradakota	Buradakota	Prathipadu
Chakirevulapalem	Jaldam	Rowthulapudi
Challeru	Jaldam	Rowthulapudi
China Sankarlapudi	China Sankarlapudi	Prathipadu
Chintaluru	Chintaluru	Prathipadu
D. Pydipala	Jaldam	Rowthulapudi
Dabbadi	Raghavapatnam	Rowthulapudi
Dhara Jagannadhapuram	Srungadhara Agraharam	Rowthulapudi
Dhara Mallapuram	Velangi	Sankhavaram
Dharmavaram	Dharmavaram	Prathipadu
Diguva Sivada	Diguva Sivada	Rowthulapudi
Diguvadarpalle	Kothuru	Rowthulapudi
Doparthi	Bavuruvaka	Prathipadu
East Lakshmiapuram	East Lakshmiapuram	Yeleswaram
Gajjanapudi	Gajjanapudi	Prathipadu
Gangavaram	Gangavaram	Rowthulapudi

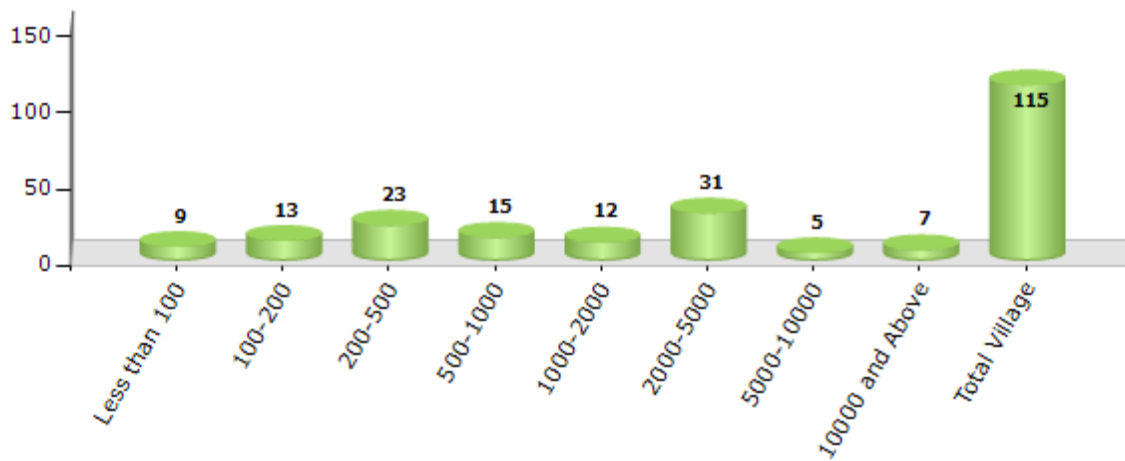
Contd....

## Demographics

### Number of Villages by Population Size - 2011

Less than 100	100-200	200-500	500-1000	1000-2000	2000-5000	5000-10000	10000 and Above	Total Village
9	13	23	15	12	31	5	7	115

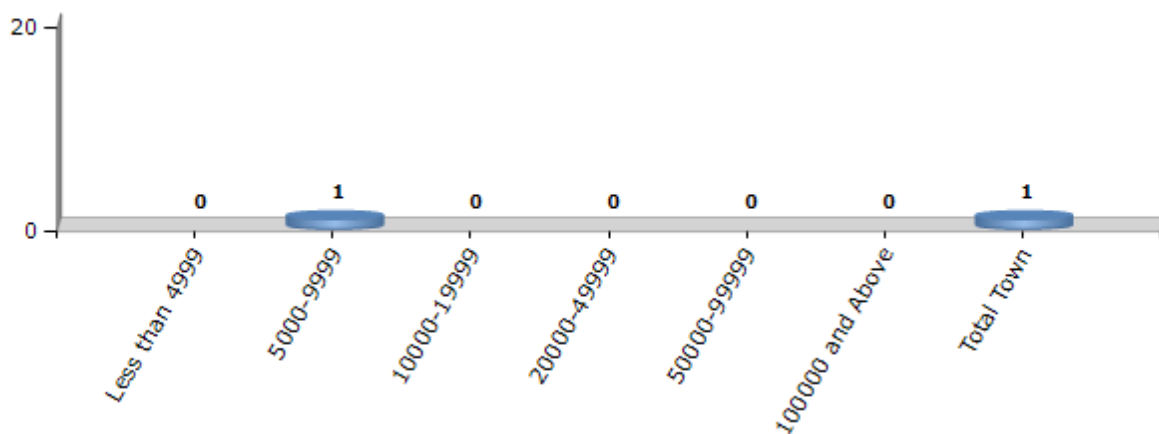
Number of Villages by Population Size - 2011



### Number of Towns by Population Size - 2011

Less than 4999	5000-9999	10000-19999	20000-49999	50000-99999	100000 and Above	Total Town
0	1	0	0	0	0	1

Number of Towns by Population Size - 2011

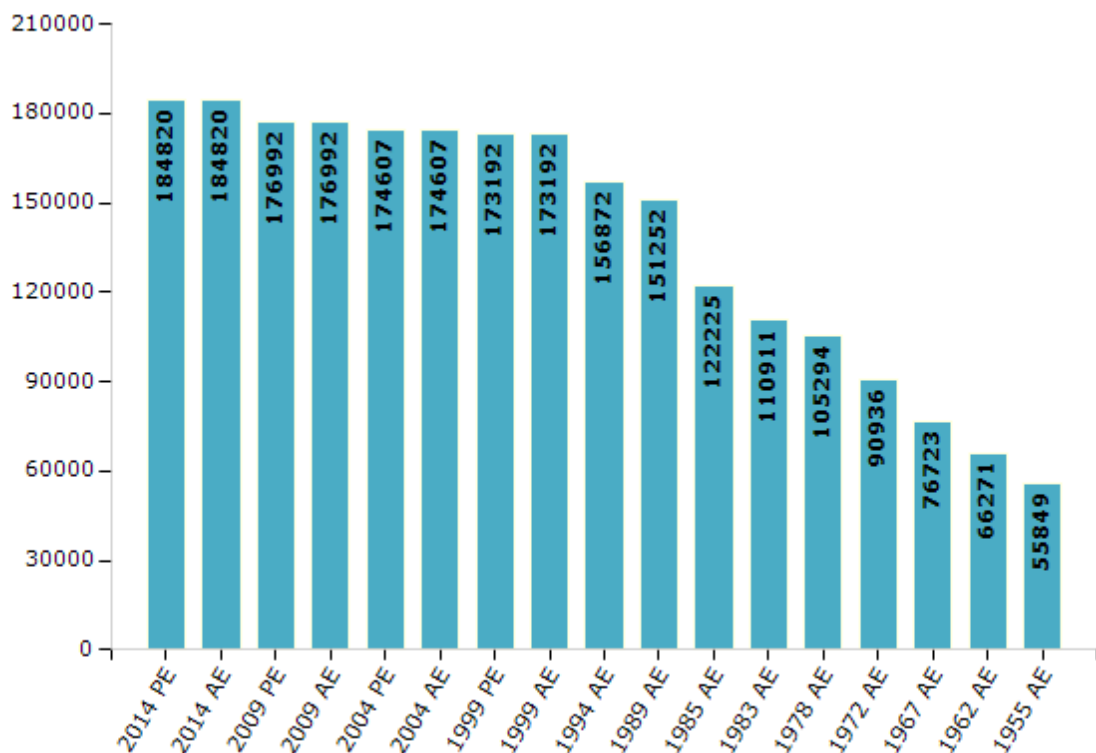


## Electoral Features

### Electors by Male & Female

Year	Male	Female	Others	Total	Year	Male	Female	Others	Total
2014 PE	91895	92910	15	184820	1989 AE	75159	76093	-	151252
2014 AE	91895	92910	15	184820	1985 AE	60192	62033	-	122225
2009 PE	86670	90322	-	176992	1983 AE	54103	56808	-	110911
2009 AE	86670	90322	-	176992	1978 AE	51440	53854	-	105294
2004 PE	85801	88806	-	174607	1972 AE	44323	46613	-	90936
2004 AE	85801	88806	-	174607	1967 AE	76723	-	-	76723
1999 PE	85623	87569	-	173192	1962 AE	66271	-	-	66271
1999 AE	85623	87569	-	173192	1957 AE	-	-	-	-
1994 AE	77869	79003	-	156872	1955 AE	55849	-	-	55849

Number of Electors



Note : AE : Assembly Election, PE : Assembly Segment of Parliamentary Election



## Historical Summary Election Results

### Summary Result of Assembly Election - 2009

Candidate Name	Party	Votes	Votes %
Parvatha Sri Satyanarayanamurthy	TDP	46925	35.32
Varupula Subbarao	INC	43639	32.85
Thota Venkataswamy Naidu @ Naveen	PRAP	30544	22.99
Arjunarao Yegupati	CPI(ML)(L)	1793	1.35
Thota Venkataramana	BJP	1684	1.27
Sampathi Apparao	IND	1165	0.88
Pilla Buli Maliyya	BHSASP	1056	0.79
Neelam Veeravenkata Satyanarayana	LSP	1041	0.78
Veerapratap Allu	IND	1035	0.78
Golla Sekharbabu	IND	905	0.68
Anisupreethi Dommeti	BSP	816	0.61
Veerababu Gullinkala	IND	606	0.46
Sunkara Venkateswararao	RKSP	520	0.39
Bodapati Ramarao	RPI(A)	417	0.31
Chintala Marysubashini	TPPP	401	0.3
Dulla Veerraju	IND	304	0.23

## Polling Station Level Election Results

### Number and Name of Polling Stations (PS) (2014 AE)

Number of Polling Stations	Name of Polling Stations	Number of Polling Stations	Name of Polling Stations
1	Rcm Aided Elementary School, Marriveedu	22	Mppe .School, Ambedkar Nagar, Yeleswaram
2	Rcm Aided Elementary School, Marriveedu	23	Mppe .School, Ambedkar Nagar, Yeleswaram
3	Mppe School, New Building, Parimitadaka	24	Mppup.School, Main Building, C. Rayavaram
4	Mppup Schoolnew Building, J. Annavaram	25	Government Junior College, Yeleswaram
5	Mppup Schoolnew Building, J. Annavaram	26	Government Junior College, Yeleswaram
6	Gramapanchayat Office, J.Annavaram	27	Government Junior College, Yeleswaram
7	M.P.P.U.P. School Westernside Block, Turpu Lakshnipuram	28	Government Junior College, Yeleswaram
8	Mppe School, Main Building, Ramanayyapeta	29	Government Junior College, Yeleswaram
9	Zpp Girls High School, Northern Side Building, Yeleswaram	30	Government Junior College, Yeleswaram
10	Zpp Girls High School, Northern Side Building, Yeleswaram	31	Mpp Main Ele School, Lingamparthy
11	Mppmain Eltry Scl, Main Bck, Yeleswaram	32	Zpp High School, Lingamparthy
12	Grama Panchayati Office, Yeleswaram	33	Zpp High School, Lingamparthy
13	Mppmain Eltry Scl, Main Bck, Yeleswaram	34	Zpp High School, Lingamparthy
14	Grama Panchayati Office, Yeleswaram	35	Mpp Main Ele School, Lingamparthy
15	Mppmain Eltry Scl, Main Bck, Yeleswaram	36	Mppspl. Elementary School, Lingamparthy
16	Mppmain Eltry Scl, Main Bck, Yeleswaram	37	Mppspl. Elementary School, Lingamparthy
17	Mpp Town Eary Scl North Bldg., Yeleswaram	38	Mpp Elementary School, Bhadravaram
18	Mpp Town Eary Scl North Bldg., Yeleswaram	39	Mpp Elementary School, Bhadravaram
19	Mpp Town Eary Scl North Bldg., Yeleswaram	40	Mpp Elementary School, Peddanapalli
20	Mpp Town Eary Scl North Bldg., Yeleswaram	41	Mpp Elementary School, Peddanapalli
21	Mpp Town Eary Scl North Bldg., Yeleswaram	42	Mpp Elementary School, Peddanapalli

Contd....

## Polling Station Level Election Results

### Polling Station-wise Votes Secured by Overall Top Five Parties in Prathipadu Assembly in Assembly Election (AE) under Kakinada Parliamentary Constituency in Andhra Pradesh (2014)

Number of Polling Station	Winner - Varupula Subbarao (YSRCP)	Runner-up - Parvatha Sri Satya narayan amurthy (TDP)	3rd - Mudragada Padmanabham (IND)	4th - Parvatha Sri Purna chandra Prasadu (INC)	5th - Rechukatla Simhachalam (CPI(ML)(L))	NOTA	Other	Total Votes Secured
36	631	304	7	13	7	1	9	972
37	608	197	1	7	8	5	5	831
38	354	202	10	14	3	1	4	588
39	480	304	29	34	3	0	3	853
40	82	423	30	21	1	4	3	564
41	287	246	31	4	2	0	3	573
42	257	469	29	21	2	0	8	786
43	663	206	52	14	0	5	8	948
44	304	202	1	5	0	2	8	522
45	439	179	17	11	0	3	5	654
46	514	347	33	16	5	0	7	922
47	575	284	16	11	4	2	6	898
48	481	468	32	22	2	5	11	1021
49	286	295	16	23	3	1	6	630
50	525	429	16	27	4	3	16	1020
51	240	217	23	9	2	1	6	498
52	353	447	10	48	3	5	6	872
53	336	252	12	18	4	5	12	639
54	221	275	24	10	2	1	9	542
55	220	199	14	14	0	1	5	453
56	580	243	32	9	4	2	9	879
57	133	129	52	12	0	1	8	335
58	370	273	112	16	3	3	13	790
59	263	341	150	17	3	4	11	789
60	54	73	62	7	0	1	4	201
61	293	200	108	21	6	3	11	642
62	301	165	32	12	3	2	16	531
63	430	133	17	14	2	4	13	613
64	371	228	279	29	0	2	16	925
65	160	250	98	14	2	0	3	527
66	359	159	240	12	7	2	12	791
67	256	293	172	10	3	4	16	754
68	299	377	93	17	1	4	12	803
69	256	179	158	11	1	0	18	623
70	198	230	290	28	3	14	38	801

Contd....

## Polling Station Level Election Results

### Winner, Runner-up and 3rd Party Position & Winning Margin According to Polling Stations in Prathipadu Assembly in Assembly Election (AE) under Kakinada Parliamentary Constituency in Andhra Pradesh (2014)

Polling Station Number	Winner Party	Winner Votes (%)	Runner-up Party	Runner-up Votes (%)	Winning Margin Votes (%)	Third Party	Third Party Votes (%)	Other Votes (%)
75	TDP	253 (39.16)	YSRCP	217 (33.59)	36 (5.57)	IND (MP)	162 (25.08)	14 (2.17)
76	TDP	191 (35.83)	IND (MP)	179 (33.58)	12 (2.25)	YSRCP	139 (26.08)	24 (4.5)
77	YSRCP	420 (47.57)	TDP	310 (35.11)	110 (12.46)	IND (MP)	100 (11.33)	53 (6)
78	YSRCP	518 (52.32)	TDP	240 (24.24)	278 (28.08)	IND (MP)	187 (18.89)	45 (4.55)
79	YSRCP	392 (54.52)	TDP	254 (35.33)	138 (19.19)	IND (MP)	34 (4.73)	39 (5.42)
80	TDP	413 (48.3)	YSRCP	221 (25.85)	192 (22.45)	IND (MP)	178 (20.82)	43 (5.03)
81	TDP	411 (47.68)	YSRCP	261 (30.28)	150 (17.4)	IND (MP)	144 (16.71)	46 (5.34)
82	TDP	318 (41.3)	YSRCP	226 (29.35)	92 (11.95)	IND (MP)	181 (23.51)	45 (5.84)
83	TDP	367 (47.17)	YSRCP	190 (24.42)	177 (22.75)	IND (MP)	174 (22.37)	47 (6.04)
84	TDP	413 (51.88)	YSRCP	251 (31.53)	162 (20.35)	IND (MP)	102 (12.81)	30 (3.77)
85	YSRCP	300 (44.64)	TDP	203 (30.21)	97 (14.43)	IND (MP)	145 (21.58)	24 (3.57)
86	YSRCP	348 (42.65)	TDP	256 (31.37)	92 (11.28)	IND (MP)	181 (22.18)	31 (3.8)
87	YSRCP	277 (44.53)	TDP	200 (32.15)	77 (12.38)	IND (MP)	125 (20.1)	20 (3.22)
88	TDP	349 (40.21)	YSRCP	307 (35.37)	42 (4.84)	IND (MP)	156 (17.97)	56 (6.45)
89	TDP	367 (53.03)	YSRCP	186 (26.88)	181 (26.15)	IND (MP)	101 (14.6)	38 (5.49)
90	TDP	346 (46.01)	YSRCP	225 (29.92)	121 (16.09)	IND (MP)	138 (18.35)	43 (5.72)
91	TDP	248 (35.58)	YSRCP	240 (34.43)	8 (1.15)	IND (MP)	160 (22.96)	49 (7.03)
92	YSRCP	462 (46.62)	TDP	277 (27.95)	185 (18.67)	IND (MP)	184 (18.57)	68 (6.86)
93	YSRCP	497 (48.16)	TDP	461 (44.67)	36 (3.49)	IND (MP)	31 (3)	43 (4.17)
94	TDP	444 (47.33)	YSRCP	275 (29.32)	169 (18.01)	CPI(ML)(L)	103 (10.98)	116 (12.37)
95	YSRCP	538 (58.8)	TDP	305 (33.33)	233 (25.47)	INC	35 (3.83)	37 (4.04)
96	YSRCP	516 (51.96)	TDP	410 (41.29)	106 (10.67)	INC	23 (2.32)	44 (4.43)
97	YSRCP	399 (61.67)	TDP	171 (26.43)	228 (35.24)	CPI(ML)(L)	29 (4.48)	48 (7.42)
98	YSRCP	446 (45.84)	TDP	418 (42.96)	28 (2.88)	INC	57 (5.86)	52 (5.34)
99	YSRCP	291 (45.05)	TDP	168 (26.01)	123 (19.04)	IND (MP)	134 (20.74)	53 (8.2)
100	TDP	373 (47.4)	YSRCP	293 (37.23)	80 (10.17)	IND (MP)	78 (9.91)	43 (5.46)
100A	TDP	213 (41.52)	YSRCP	193 (37.62)	20 (3.9)	IND (MP)	83 (16.18)	24 (4.68)
101	TDP	438 (46.11)	YSRCP	409 (43.05)	29 (3.06)	IND (MP)	51 (5.37)	52 (5.47)
102	TDP	527 (52.23)	YSRCP	408 (40.44)	119 (11.79)	IND (MP)	35 (3.47)	39 (3.87)
103	TDP	399 (48.6)	YSRCP	300 (36.54)	99 (12.06)	IND (MP)	56 (6.82)	66 (8.04)
104	YSRCP	501 (58.6)	TDP	308 (36.02)	193 (22.58)	INC	15 (1.75)	31 (3.63)
105	YSRCP	404 (49.21)	TDP	358 (43.61)	46 (5.6)	IND (MP)	25 (3.05)	34 (4.14)
106	TDP	360 (50.78)	YSRCP	286 (40.34)	74 (10.44)	IND (MP)	37 (5.22)	26 (3.67)
107	TDP	360 (47.06)	YSRCP	338 (44.18)	22 (2.88)	INC	36 (4.71)	31 (4.05)
108	TDP	374 (45.11)	YSRCP	275 (33.17)	99 (11.94)	IND (MP)	145 (17.49)	35 (4.22)
109	YSRCP	373 (41.22)	TDP	272 (30.06)	101 (11.16)	IND (MP)	213 (23.54)	47 (5.19)
110	YSRCP	524 (54.75)	TDP	335 (35.01)	189 (19.74)	IND (MP)	59 (6.17)	39 (4.08)

Contd....

## Socio-Economic Amenities - Rural

### Access to Education Facilities

Particulars	Number of Villages (% of Population)				
	Available	Not Available	If Not Available (Distance of Nearest Facility)		
			A	B	C
Govt. Primary School	107 (100)	8 (0)	3 (0)	5 (0)	0 (0)
Private Primary School	14 (43)	101 (57)	0 (0)	0 (0)	0 (0)
Govt. Middle School	45 (81)	70 (19)	34 (11)	29 (7)	5 (0)
Private Middle School	10 (39)	105 (61)	0 (0)	1 (0)	0 (0)
Govt. Secondary School	20 (55)	95 (45)	35 (23)	39 (19)	18 (2)
Private Secondary School	7 (34)	108 (66)	0 (0)	3 (1)	0 (0)
Govt. Senior Secondary School	7 (27)	108 (73)	5 (7)	7 (9)	38 (21)
Private Senior Secondary School	6 (28)	109 (72)	1 (2)	11 (13)	43 (13)
Govt. Arts and Science Degree College	1 (12)	114 (88)	2 (5)	7 (10)	40 (24)
Private Arts and Science Degree College	2 (7)	113 (93)	1 (4)	6 (12)	56 (26)
Govt. Engineering College	0 (0)	115 (100)	0 (0)	0 (0)	2 (1)
Private Engineering College	0 (0)	115 (100)	0 (0)	3 (5)	110 (94)
Govt. Medicine College	0 (0)	115 (100)	0 (0)	0 (0)	86 (80)
Private Medicine College	0 (0)	115 (100)	0 (0)	0 (0)	29 (20)
Govt. Management Institute	0 (0)	115 (100)	0 (0)	0 (0)	19 (15)
Private Management Institute	0 (0)	115 (100)	0 (0)	0 (0)	96 (85)
Govt. Polytechnic	0 (0)	115 (100)	0 (0)	0 (0)	49 (60)
Private Polytechnic	0 (0)	115 (100)	0 (0)	2 (0)	64 (40)
Govt. Vocational Training School/ITI	0 (0)	115 (100)	0 (0)	2 (0)	31 (20)
Private Vocational Training School/ITI	1 (4)	114 (96)	1 (4)	5 (9)	75 (62)
Govt. Non Formal Training Centre	0 (0)	115 (100)	0 (0)	0 (0)	115 (100)
Private Non Formal Training Centre	0 (0)	115 (100)	0 (0)	0 (0)	0 (0)
Govt. School For Disabled	0 (0)	115 (100)	0 (0)	0 (0)	115 (100)
Private School For Disabled	0 (0)	115 (100)	0 (0)	0 (0)	0 (0)
Government Others	0 (0)	115 (100)	0 (0)	0 (0)	0 (0)
Private Others	0 (0)	115 (100)	0 (0)	0 (0)	0 (0)

Note : Distance A : Less than 5 km; B : Between 5-10 km; C : 10+ km.; Source : Data Analysis is based on 2011 Census.



## DISCLAIMER

The Terms of Use and Disclaimer of Datanet India Private Limited (hereinafter referred to as "Datanet") for use of this analysis report :-

1. **Andhra Pradesh Assembly Factbook™** is a Registered Trade Mark owned by Datanet.
2. All the maps are sketched and graphical representation only and have not been drawn to the scale and also not to represent the actual geographical area or boundary of the unit.
3. The data for the aforesaid analysis is based on authentic sources and has been culled from the various publications of Census, CSO and NSSO for district and block level data, various central and state government departments, Central & State Elections Commissions and the concerned Returning Officers' releases, Electoral Polls, Election results and allied publications, internal assessment, surveys, estimates and analysis. Therefore, certain adjustment of data at micro level may have been done to arrive closer to the macro data.
4. Data have been provided on an "AS IS" and "AS AVAILABLE" basis.
5. The colours shown in the maps or diagram and charts of a particular party, alliance or AC are indicative and do not represent them.
6. This publication which includes maps, sheets, graphs and data would be the property under copyright of Datanet only. The user may use these for its internal study, analysis and research purposes. It's public display, re-selling or any commercial uses by the user are not allowed.
7. Datanet has taken due care and caution in compilation and processing of data and allied information, but does not guarantee the accuracy, adequacy or completeness of any information/analysis and will be not responsible for any errors or omissions or for the results obtained from the use of such information/analysis.
8. All the contents for the publication have been culled from various authentic sources and Datanet reasonably believes such sources to be reliable, but does not make any representations, express or implied as to the accuracy or fitness of use of such information. The information or contents of the information/analysis do not constitute advice and should not be relied upon in making (or refraining from making) any decision. Any reliance placed upon the information provided by Datanet is the sole responsibility and strictly at the user's risk.
9. In no event will Datanet be liable for any damages (including, without limitation, damages for loss of business projects, or loss of profits) arising in contract, tort or otherwise from the use of or inability to use any of its contents, or from any action taken (or refrained from being taken) as a result of using the analysis or any of its contents. Datanet its directors, owners, editors, officials, employees, distributor and agents or any associate will not be liable for any errors in the information contained or any consequences arising from the use of the contents of the provided information/analysis.
10. If any provision of these terms and conditions is held invalid or illegal or unenforceable for any reason by any court of competent jurisdiction, such provision shall be severed and the remainder of provisions of the terms and conditions shall continue in full force and effect as if the Term of Use had been executed with the invalid, illegal or unenforceable provision eliminated.
11. If there are any discrepancies in the information provided, please bring it to attention of Datanet for suitable rectification measures.

**Buy Online This Complete Book At  
Datanet India eBooks Store**

[www.datanetindia-ebooks.com](http://www.datanetindia-ebooks.com)

or go directly at

[http://www.datanetindia-  
ebooks.com/Assembly\\_factbook/Andhra\\_pradesh/Kakinada/  
Prathipadu](http://www.datanetindia-ebooks.com/Assembly_factbook/Andhra_pradesh/Kakinada/Prathipadu)

**Elections***in***India**.com  
THE ESSENCE OF INDIAN DEMOCRACY

