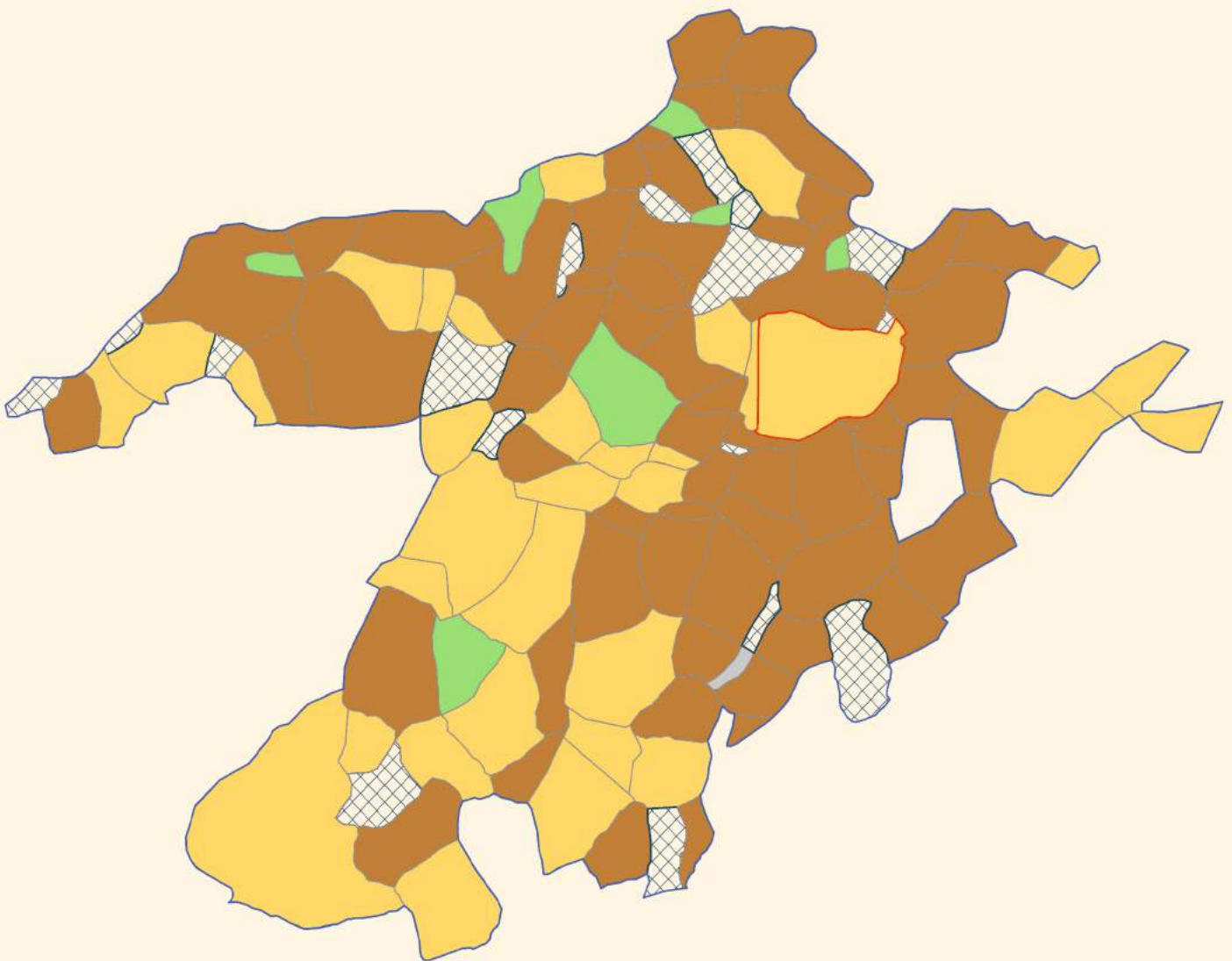


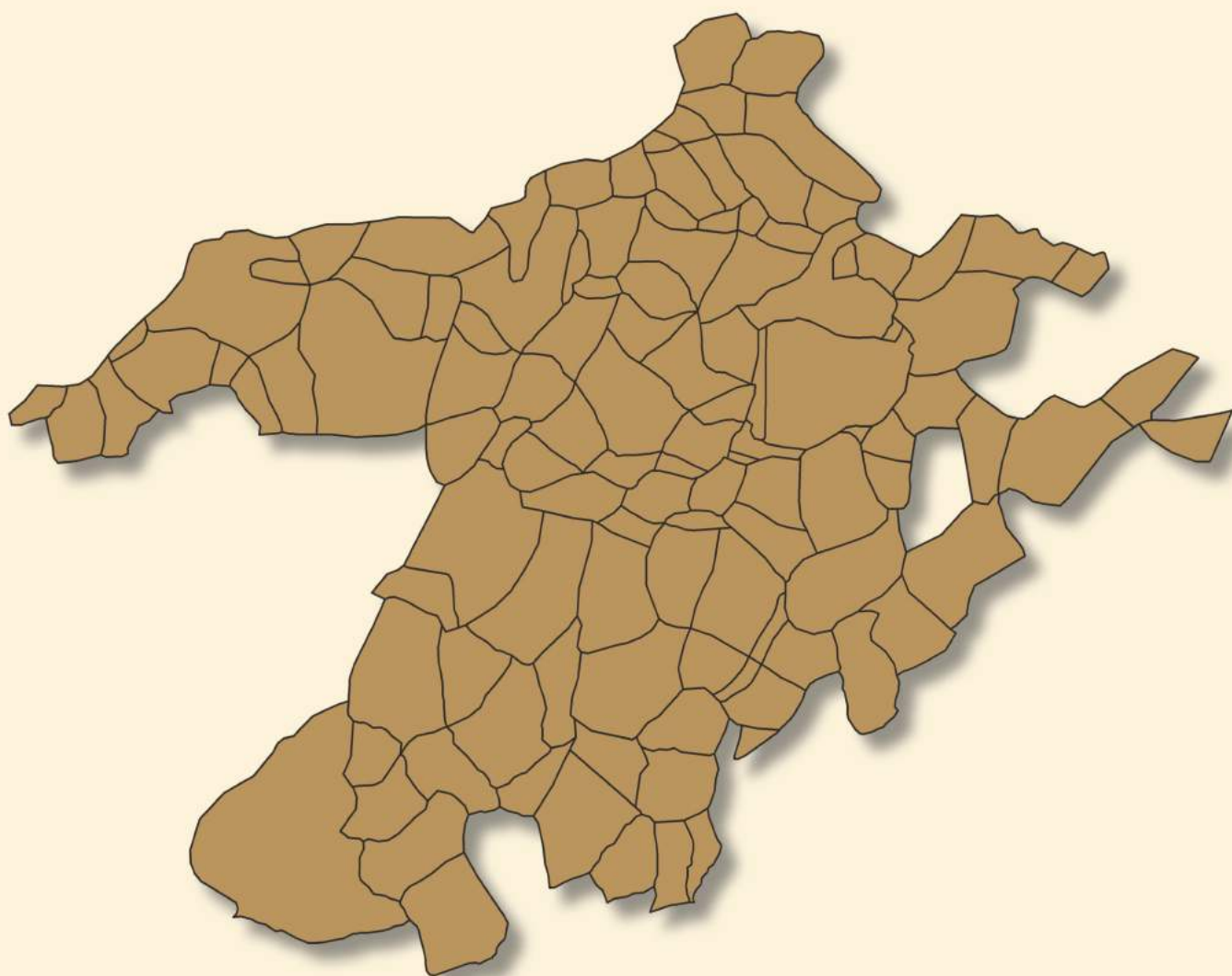
Haryana Assembly Factbook™ Shahbad Assembly Constituency



**Key Electoral Data of Shahbad Assembly Constituency
(1967-2017)**

Haryana

Assembly Factbook™



Shahbad Assembly Constituency

Editor & Director

Dr. R.K. Thukral

Research Editor

Dr. Shafeeq Rahman

**Compiled, Researched and Published by
Datanet India Pvt. Ltd.**

D-100, 1st Floor,

Okhla Industrial Area, Phase-I,

New Delhi- 110020.

Ph.: 91-11- 43580781, 26810964-65-66

Email : support@datanetindia-ebooks.com

Website : www.electionsinindia.com

Online Book Store :

www.datanetindia-ebooks.com

Report No. : AFB/HR-12-0118

ISBN : 978-93-5293-544-4

First Edition : January, 2018

Updated Edition : June, 2019

Price : Rs. 11500/-

US\$ 310

© Datanet India Pvt. Ltd.

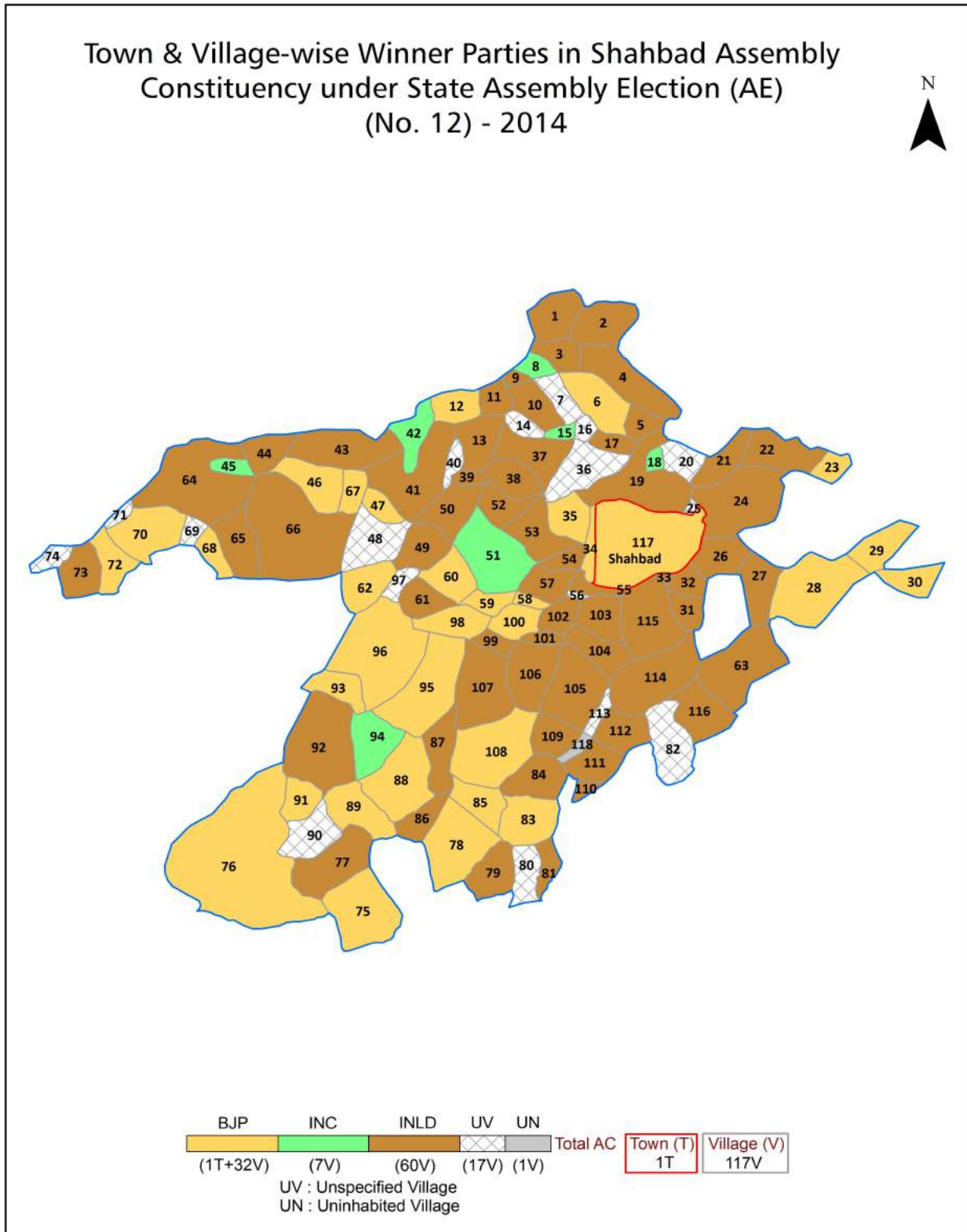
All rights reserved. No part of this book may be reproduced, stored in a retrieval system or transmitted in any form or by any means, mechanical photocopying, photographing, scanning, recording or otherwise without the prior written permission of the publisher. Please refer to Disclaimer at page no. 114 for the use of this publication.

Printed in India

Contents

No.	Particulars	Page No.
	Introduction	
1	Assembly Constituency at a Glance Features of Assembly as per Delimitation Commission of India (2008)	1-2
	Location and Political Maps	
2	Location Map Boundaries of Assembly Constituency in District Boundaries of Assembly Constituency under Parliamentary Constituency Town & Village-wise Winner Parties- 2014-PE, 2014-AE and 2009-AE	3-8
	Administrative Setup	
3	District Sub-district Towns Villages Inhabited Villages Uninhabited Villages Village Panchayat Intermediate Panchayat	9-15
	Demographics	
4	Population Households Rural/Urban Population Towns and Villages by Population Size Sex Ratio (Total & 0-6 Years) Religious Population Social Population Literacy Rate	16-17
	Electoral Features	
5	Important Dates of Last Elections Held Electors by Gender Service Electors Voters Voters Turnout Polling Stations & Average Number of Electors per Polling Station Electors by Age Group Present Elected Representatives	18-23
	Historical Summary Election Results	
6	Vote Share of Major Parties Winning Margin (Number & Percentage) Polarity of Parties Summary Result of Assembly Segment of Parliamentary Elections 2014, 2009, 2004 and 1999 Summary Result of Assembly Elections 2014, 2009, 2005, 2000, 1996, 1991, 1987, 1982, 1977, 1972, 1968 and 1967	24-42
	Polling Station Level Election Results	
7	Name and Number of Polling Station 2014-PE, 2014-AE and 2009-AE Polling Station-wise Electors, Voters & Voters Turnout 2014-PE, 2014-AE and 2009-AE Polling Station wise Elections Results 2014-PE, 2014-AE and 2009-AE	43-91
	Share of Assembly Constituency	
8	Share of Assembly Constituency in State, District and Parliamentary Constituency	92
	Socio-Economic Amenities	
9	Access to Administrative Units Agricultural, Manufacturing and Industrial Commodities Demographic Indicators Education Health & Manpower Drinking Water Supply Sanitation Entertainment and Recreations Infrastructure Power Food Allocation Distribution and Marketing of Agriculture Commodities Infrastructure Transport and Road Infrastructure Communication Banking and Financial Services Land Use Irrigation Source	94-108
10	Abbreviation & Sources	110-112
11	Disclaimer	114

Location & Political Map



Administrative Setup

List of Village Panchayat & Intermediate Panchayat (Block) Name

Village Name	Village Panchayat Name	Intermediate Panchayat Name
Adhaun (403)	Adhaun (403)	Thanesar
Ahmadpur (271)	Ahmadpur (271)	Shahbad
Ajrana Kalan (274)	Ajrana Kalan (274)	Thanesar
Ajrana Khurd (276)	Ajrana Khurd (276)	Thanesar
Ajrani (410)	Ajrani (410)	Thanesar
Ajrawar (314)	Ajrawar (314)	Shahbad
Atwan (101)	Atwan (101)	Shahbad
Babkpur (295)	Babkpur (295)	Shahbad
Bakana (93)	Bakana (93)	Shahbad
Barham (409)	Barham (409)	Shahbad
Basantpur (284)	Basantpur (284)	Shahbad
Berthali (125)	Berthali (125)	Babain
Bhukar Majra (222)	Bhukar Majra (222)	Shahbad
Bibipur (273)	Bibipur (273)	Shahbad
Bichganwah (420)	Bichganwah (420)	Thanesar
Bijharpur (283)	Bijharpur (283)	Shahbad
Bir Chhapar (95)	Bir Chhapar (95)	Thanesar
Boripur (225)	Boripur (225)	Shahbad
Buhawa (126)	Buhawa (126)	Babain
Chamun (294)	Chamun (294)	Shahbad
Chanarthal (100)	Chanarthal (100)	Shahbad
Charhuni Jattan (92)	Charhuni Jattan (92)	Shahbad
Chhapra (241)	Chhapra (241)	Shahbad
Chhorpur (218)	Chhorpur (218)	Shahbad
Chhpri (Part)(242)	Chhpri (Part)(242)	Shahbad
Chiba (405)	Chiba (405)	Thanesar
Dadlu (238)	Dadlu (238)	Shahbad
Dalla Majra (287)	Tharauli (288)	Shahbad
Damli (236)	Damli (236)	Shahbad

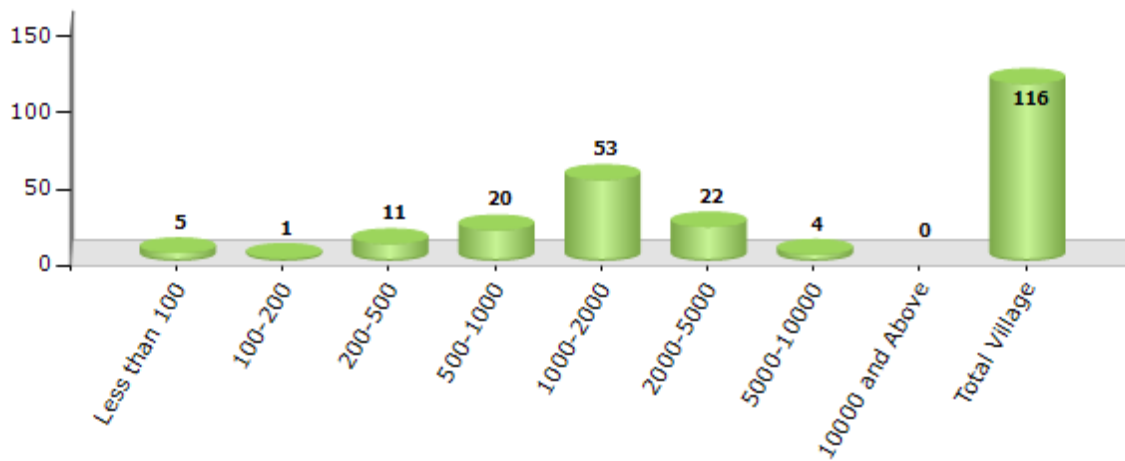
Contd....

Demographics

Number of Villages by Population Size - 2011

Less than 100	100-200	200-500	500-1000	1000-2000	2000-5000	5000-10000	10000 and Above	Total Village
5	1	11	20	53	22	4	0	116

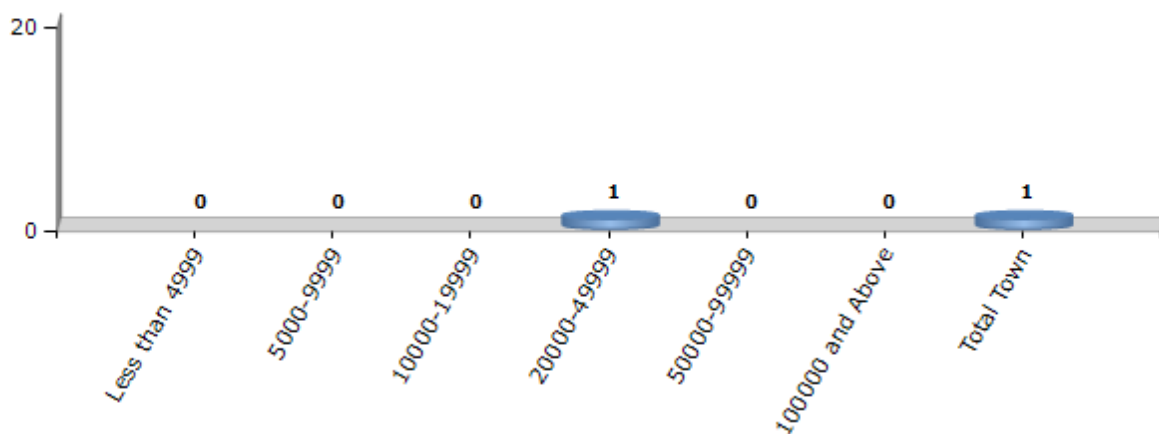
Number of Villages by Population Size - 2011



Number of Towns by Population Size - 2011

Less than 4999	5000-9999	10000-19999	20000-49999	50000-99999	100000 and Above	Total Town
0	0	0	1	0	0	1

Number of Towns by Population Size - 2011

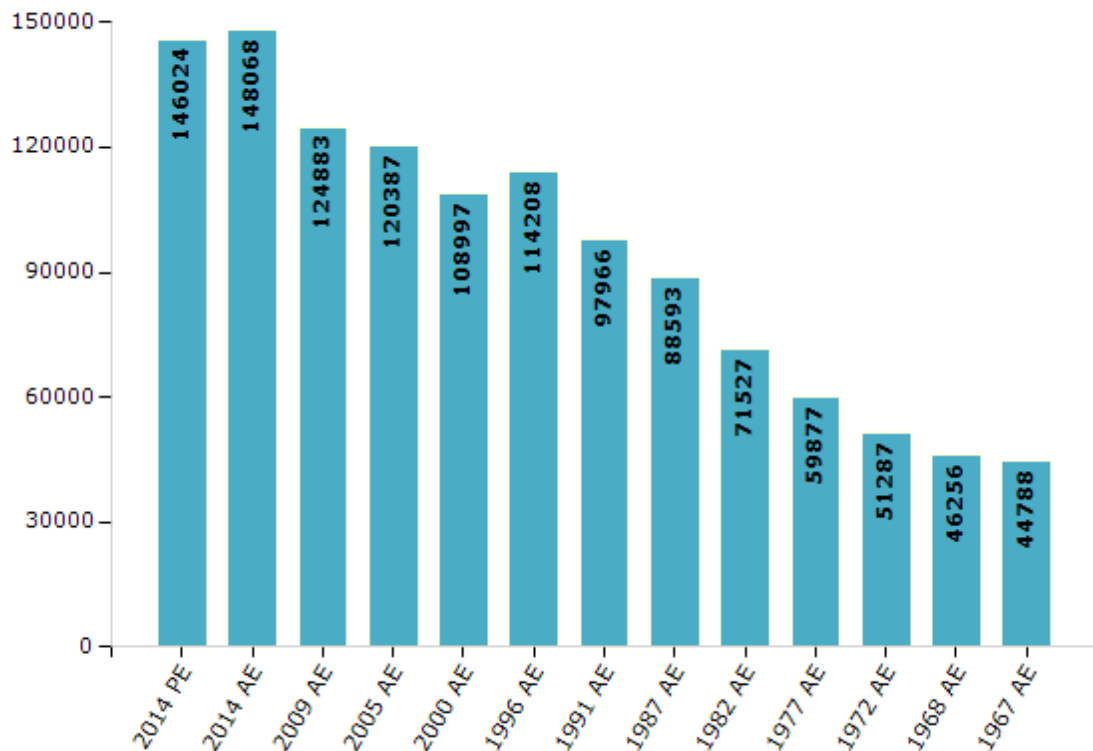


Electoral Features

Electors by Male & Female

Year	Male	Female	Others	Total	Year	Male	Female	Others	Total
2014 PE	78114	67910	0	146024	1996 AE	60358	53850	-	114208
2014 AE	78882	69186	0	148068	1991 AE	52672	45294	-	97966
2009 PE	-	-	-	-	1987 AE	46839	41754	-	88593
2009 AE	67397	57486	-	124883	1982 AE	37691	33836	-	71527
2005 AE	64243	56144	-	120387	1977 AE	31570	28307	-	59877
2004 PE	-	-	-	-	1972 AE	26927	24360	-	51287
2000 AE	59001	49996	-	108997	1968 AE	24381	21875	-	46256
1999 PE	-	-	-	-	1967 AE	44788	-	-	44788

Number of Electors



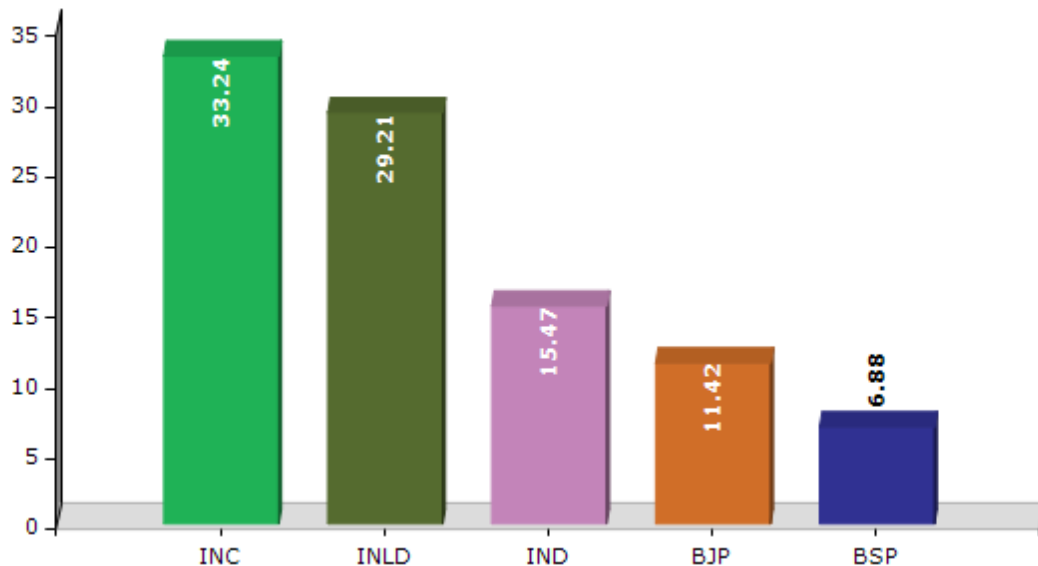
Note : AE : Assembly Election, PE : Assembly Segment of Parliamentary Election

Historical Summary Election Results

Summary Result of Assembly Election - 2009

Candidate Name	Party	Votes	Votes %
Anil Dhantori	INC	30843	33.24
Jitender Kumar	INLD	27102	29.21
Ram Karan	IND	14352	15.47
Krishan Kumar	BJP	10593	11.42
Dr. Baldev Singh	BSP	6387	6.88
Suraj Bhan	HJCBL	1012	1.09
Sarup Chand	CPI	934	1.01
Karam Singh	IND	867	0.93
Devi Dayal Bhatti	IND	424	0.46
Rajesh Kumar	BSP(K)	272	0.29

Votes Percentage of Top Parties - 2009



Polling Station Level Election Results

Number and Name of Polling Stations (PS) (2014 AE)

Number of Polling Stations	Name of Polling Stations	Number of Polling Stations	Name of Polling Stations
1	Govt. Middle School, Chhorpur	22	Govt. High School, Shanti Nagar (Kudki (Left Side)
2	Govt. Primary School, Mohri	23	Govt. Middle School, Mundhari
3	Govt. Senior Secondary School, Sabhalakhi	24	Govt. Primary School, Basantpur
4	Govt. Primary School, Haldaheri	25	Govt. Senior Secondary School, Nalwi (Right Side)
5	Govt. Middle School, Bhokar Majra	26	Govt. Senior Secondary School, Nalwi (Left Side)
6	Govt. Middle School, Golpura	27	Govt. Primary School, Nalwi Nai Basti
7	Govt. Primary School, Rai Majra	28	Govt. Primary School, Mahudunda
8	Govt. Middle School, Thaska Ali	29	Govt. Primary School, Sulkhani
9	Govt. Primary School, Tharoli	30	Govt. Primary School, Mahiyulindpur
10	Govt. Primary School, Dalla Majra	31	Govt. Primary School, Saidpur Barwaliya
11	Govt. Senior Secondary School, Thol (Right Side)	32	Govt. High School, Kalyana
12	Govt. Senior Secondary School, Thol (Left Side)	33	Govt. Primary School, Boripur
13	Govt. Primary School, Thol	34	Govt. Senior Secondary School, Landi (Right Side)
14	Govt. Primary School, Saini Majra	35	Govt. Senior Secondary School, Landi (Left Side)
15	Govt. Primary School, Fatehgarh Majra Chammu	36	Govt. Primary School, Dau Majra
16	Govt. Middle School, Chammu Kala (Right Side)	37	Govt. Primary School, Jainpur
17	Govt. Middle School, Chammu Kala (Left Side)	38	Govt. High School, Nagla
18	Govt. High School, Ajravar (Right Side)	39	Govt. Primary School, Kalsani
19	Govt. High School, Ajravar (Left Side)	40	Govt. Middle School, Fatehgarh Jharoli
20	Govt. Primary School, Gorkha	41	Govt. Primary School, Jharoli Khurd
21	Govt. High School, Shanti Nagar (Kudki (Right Side)	42	Govt. Middle School, Bijadpur (Right Side)

Contd....

Polling Station Level Election Results

Polling Station-wise Votes Secured by Overall Top Five Parties in Shahbad Assembly in Assembly Election (AE) under Kurukshetra Parliamentary Constituency in Haryana (2014)

No. of Polling Station	Winner - Krishan Kumar (BJP)	Runner-up - Ram Karan (INLD)	3rd - Anil Kumar Dhantori (INC)	4th - Dr. Baldev Singh (BSP)	5th - Memo Devi Ranga (HJCBL)	NOTA	Other	Total Votes Secured
36	375	438	239	14	2	9	12	1089
37	278	442	140	4	7	9	3	883
38	301	443	292	7	5	13	7	1068
39	151	257	109	2	0	0	4	523
40	347	381	181	3	1	5	5	923
41	200	365	183	9	8	6	3	774
42	288	340	136	5	10	3	6	788
43	256	107	166	8	3	6	7	553
44	568	101	146	6	2	6	3	832
45	447	78	253	11	13	5	3	810
46	165	164	125	2	1	0	1	458
47	396	176	127	5	4	6	4	718
48	298	164	238	5	0	6	2	713
49	270	365	236	2	4	3	5	885
50	316	93	113	1	33	1	3	560
51	196	217	144	25	0	2	2	586
52	313	273	327	2	14	8	4	941
53	312	234	369	6	3	7	5	936
54	216	253	184	7	3	1	4	668
55	323	257	142	8	1	1	2	734
56	111	213	113	7	1	1	0	446
57	242	218	160	3	0	4	4	631
58	192	157	137	1	1	5	1	494
59	300	414	263	5	2	19	8	1011
60	248	260	137	10	3	3	2	663
61	231	88	77	2	2	1	1	402
62	513	238	153	4	3	9	2	922
63	455	231	192	9	10	8	3	908
64	354	222	177	6	4	8	1	772
65	540	235	263	4	11	11	7	1071
66	299	165	105	0	1	3	1	574
67	159	106	112	0	1	4	0	382
68	359	304	260	2	4	10	1	940
69	200	101	72	0	0	1	0	374
70	384	162	246	0	3	3	1	799

Contd....

Polling Station Level Election Results

Winner, Runner-up and 3rd Party Position & Winning Margin According to Polling Stations in Shahbad Assembly in Assembly Election (AE) under Kurukshetra Parliamentary Constituency in Haryana (2014)

Polling Station Number	Winner Party	Winner Votes (%)	Runner-up Party	Runner-up Votes (%)	Winning Margin Votes (%)	Third Party	Third Party Votes (%)	Other Votes (%)
71	INLD	367 (42.53)	BJP	257 (29.78)	110 (12.75)	INC	215 (24.91)	24 (2.78)
72	BJP	468 (62.23)	INC	149 (19.81)	319 (42.42)	INLD	117 (15.56)	18 (2.39)
73	BJP	414 (47.31)	INLD	232 (26.51)	182 (20.8)	INC	221 (25.26)	8 (0.91)
74	BJP	316 (38.07)	INLD	260 (31.33)	56 (6.74)	INC	243 (29.28)	11 (1.33)
75	BJP	376 (39.75)	INC	280 (29.6)	96 (10.15)	INLD	265 (28.01)	25 (2.64)
76	BJP	496 (44.85)	INLD	315 (28.48)	181 (16.37)	INC	237 (21.43)	58 (5.24)
77	BJP	365 (55.05)	INC	146 (22.02)	219 (33.03)	INLD	143 (21.57)	9 (1.36)
77A	BJP	320 (55.46)	INLD	135 (23.4)	185 (32.06)	INC	113 (19.58)	9 (1.56)
78	INC	370 (53.7)	INLD	202 (29.32)	168 (24.38)	BJP	84 (12.19)	33 (4.79)
79	INC	307 (47.6)	INLD	168 (26.05)	139 (21.55)	BJP	115 (17.83)	55 (8.53)
80	INLD	179 (34.62)	BJP	167 (32.3)	12 (2.32)	INC	167 (32.3)	4 (0.77)
81	BJP	257 (44.77)	INLD	205 (35.71)	52 (9.06)	INC	94 (16.38)	18 (3.14)
82	BJP	363 (49.19)	INLD	208 (28.18)	155 (21.01)	INC	157 (21.27)	10 (1.36)
83	INC	380 (37.04)	INLD	359 (34.99)	21 (2.05)	BJP	255 (24.85)	32 (3.12)
84	INC	242 (39.87)	INLD	210 (34.6)	32 (5.27)	BJP	107 (17.63)	48 (7.91)
85	INLD	356 (46.23)	BJP	275 (35.71)	81 (10.52)	INC	117 (15.19)	22 (2.86)
86	INLD	246 (45.47)	BJP	167 (30.87)	79 (14.6)	INC	113 (20.89)	15 (2.77)
87	INLD	385 (42.31)	INC	278 (30.55)	107 (11.76)	BJP	233 (25.6)	14 (1.54)
88	BJP	370 (53.24)	INLD	231 (33.24)	139 (20)	INC	73 (10.5)	21 (3.02)
89	INLD	264 (35.72)	BJP	250 (33.83)	14 (1.89)	INC	210 (28.42)	15 (2.03)
90	INLD	343 (36.41)	INC	290 (30.79)	53 (5.62)	BJP	279 (29.62)	30 (3.18)
91	INLD	299 (41.13)	BJP	228 (31.36)	71 (9.77)	INC	177 (24.35)	23 (3.16)
92	BJP	237 (33.33)	INLD	226 (31.79)	11 (1.54)	INC	223 (31.36)	25 (3.52)
93	BJP	396 (48.41)	INLD	268 (32.76)	128 (15.65)	INC	123 (15.04)	31 (3.79)
94	BJP	360 (51.65)	INLD	205 (29.41)	155 (22.24)	INC	112 (16.07)	20 (2.87)
95	INLD	493 (43.98)	INC	340 (30.33)	153 (13.65)	BJP	202 (18.02)	86 (7.67)
96	INLD	379 (43.51)	BJP	322 (36.97)	57 (6.54)	INC	147 (16.88)	23 (2.64)
97	BJP	320 (50.31)	INLD	249 (39.15)	71 (11.16)	INC	53 (8.33)	14 (2.2)
98	BJP	273 (40.44)	INC	198 (29.33)	75 (11.11)	INLD	172 (25.48)	32 (4.74)
99	BJP	357 (41.37)	INLD	355 (41.14)	2 (0.23)	INC	109 (12.63)	42 (4.87)
100	BJP	290 (40.85)	INLD	246 (34.65)	44 (6.2)	INC	161 (22.68)	13 (1.83)
101	INLD	295 (42.82)	BJP	278 (40.35)	17 (2.47)	INC	102 (14.8)	14 (2.03)
102	INLD	230 (46.94)	BJP	170 (34.69)	60 (12.25)	INC	84 (17.14)	6 (1.22)
103	INLD	425 (47.49)	INC	279 (31.17)	146 (16.32)	BJP	172 (19.22)	19 (2.12)
104	INLD	213 (40.8)	BJP	160 (30.65)	53 (10.15)	INC	144 (27.59)	5 (0.96)

Contd....

Socio-Economic Amenities - Rural

Access to Education Facilities

Particulars	Number of Villages (% of Population)				
	Available	Not Available	If Not Available (Distance of Nearest Facility)		
			A	B	C
Govt. Primary School	109 (98)	7 (2)	7 (2)	0 (0)	0 (0)
Private Primary School	35 (43)	81 (57)	0 (0)	0 (0)	0 (0)
Govt. Middle School	73 (84)	43 (16)	29 (11)	11 (5)	0 (0)
Private Middle School	24 (32)	92 (68)	0 (0)	0 (0)	0 (0)
Govt. Secondary School	28 (43)	88 (57)	47 (32)	29 (16)	7 (6)
Private Secondary School	16 (21)	100 (79)	0 (0)	0 (0)	0 (0)
Govt. Senior Secondary School	14 (27)	102 (73)	49 (36)	36 (26)	11 (8)
Private Senior Secondary School	9 (13)	107 (87)	2 (1)	0 (0)	0 (0)
Govt. Arts and Science Degree College	0 (0)	116 (100)	0 (0)	18 (15)	34 (36)
Private Arts and Science Degree College	0 (0)	116 (100)	16 (11)	35 (29)	13 (9)
Govt. Engineering College	0 (0)	116 (100)	0 (0)	2 (2)	50 (50)
Private Engineering College	1 (1)	115 (99)	8 (5)	20 (12)	35 (30)
Govt. Medicine College	0 (0)	116 (100)	0 (0)	8 (6)	98 (88)
Private Medicine College	0 (0)	116 (100)	2 (2)	3 (1)	5 (3)
Govt. Management Institute	0 (0)	116 (100)	0 (0)	4 (3)	46 (45)
Private Management Institute	1 (1)	115 (99)	8 (5)	19 (13)	38 (33)
Govt. Polytechnic	0 (0)	116 (100)	0 (0)	2 (1)	41 (35)
Private Polytechnic	1 (1)	115 (99)	8 (7)	22 (22)	42 (33)
Govt. Vocational Training School/ITI	0 (0)	116 (100)	17 (12)	36 (35)	51 (46)
Private Vocational Training School/ITI	1 (1)	115 (99)	2 (1)	7 (5)	2 (1)
Govt. Non Formal Training Centre	0 (0)	116 (100)	1 (1)	5 (4)	43 (42)
Private Non Formal Training Centre	0 (0)	116 (100)	16 (11)	36 (33)	15 (10)
Govt. School For Disabled	0 (0)	116 (100)	1 (1)	9 (9)	106 (90)
Private School For Disabled	0 (0)	116 (100)	0 (0)	0 (0)	0 (0)
Government Others	0 (0)	116 (100)	0 (0)	0 (0)	0 (0)
Private Others	0 (0)	116 (100)	0 (0)	0 (0)	0 (0)

Note : Distance A : Less than 5 km; B : Between 5-10 km; C : 10+ km.; Source : Data Analysis is based on 2011 Census.

DISCLAIMER

The Terms of Use and Disclaimer of Datanet India Private Limited (hereinafter referred to as "Datanet") for use of this analysis report :-

1. **Haryana Assembly Factbook™** is a Registered Trade Mark owned by Datanet.
2. All the maps are sketched and graphical representation only and have not been drawn to the scale and also not to represent the actual geographical area or boundary of the unit.
3. The data for the aforesaid analysis is based on authentic sources and has been culled from the various publications of Census, CSO and NSSO for district and block level data, various central and state government departments, Central & State Elections Commissions and the concerned Returning Officers' releases, Electoral Polls, Election results and allied publications, internal assessment, surveys, estimates and analysis. Therefore, certain adjustment of data at micro level may have been done to arrive closer to the macro data.
4. Data have been provided on an "AS IS" and "AS AVAILABLE" basis.
5. The colours shown in the maps or diagram and charts of a particular party, alliance or AC are indicative and do not represent them.
6. This publication which includes maps, sheets, graphs and data would be the property under copyright of Datanet only. The user may use these for its internal study, analysis and research purposes. Its public display, re-selling or any commercial uses by the user are not allowed.
7. Datanet has taken due care and caution in compilation and processing of data and allied information, but does not guarantee the accuracy, adequacy or completeness of any information/analysis and will be not responsible for any errors or omissions or for the results obtained from the use of such information/analysis.
8. All the contents for the publication have been culled from various authentic sources and Datanet reasonably believes such sources to be reliable, but does not make any representations, express or implied as to the accuracy or fitness of use of such information. The information or contents of the information/analysis do not constitute advice and should not be relied upon in making (or refraining from making) any decision. Any reliance placed upon the information provided by Datanet is the sole responsibility and strictly at the user's risk.
9. In no event will Datanet be liable for any damages (including, without limitation, damages for loss of business projects, or loss of profits) arising in contract, tort or otherwise from the use of or inability to use any of its contents, or from any action taken (or refrained from being taken) as a result of using the analysis or any of its contents. Datanet its directors, owners, editors, officials, employees, distributor and agents or any associate will not be liable for any errors in the information contained or any consequences arising from the use of the contents of the provided information/analysis.
10. If any provision of these terms and conditions is held invalid or illegal or unenforceable for any reason by any court of competent jurisdiction, such provision shall be severed and the remainder of provisions of the terms and conditions shall continue in full force and effect as if the Term of Use had been executed with the invalid, illegal or unenforceable provision eliminated.
11. If there are any discrepancies in the information provided, please bring it to attention of Datanet for suitable rectification measures.

Buy Online This Complete Book At
Datanet India eBooks Store

www.datanetindia-ebooks.com

or go directly at

[http://www.datanetindia-
ebooks.com/Assembly_factbook/Haryana/Kurukshetra/
Shahbad](http://www.datanetindia-ebooks.com/Assembly_factbook/Haryana/Kurukshetra/Shahbad)

ElectionsinIndia.com
THE ESSENCE OF INDIAN DEMOCRACY

